



TEST FORM NUMBER

Maximum Marks : 100
Total Questions : 100
Time Allowed : 60 Min.

INSTRUCTIONS TO CANDIDATE**Read the following instructions carefully before you begin to attempt the questions.**

- (1) This booklet contains **100 Questions** in all comprising the following **three** parts.

Part-(I) : English Language	(30 Questions)
Part-(II) : Quantitative Aptitude	(35 Questions)
Part-(III) : Reasoning Aptitude	(35 Questions)
- (2) All the questions are compulsory and carry equal marks.
- (3) Before you start to attempt the questions you must explore this booklet and ensure that it contains all the pages and find that no page is missing or replaced. If you find any flaw in this booklet, you must get it replaced immediately.
- (4) **Each question carries negative marking also as 0.25 mark will be deducted for each wrong answer.**
- (5) You will be supplied the Answer-sheet separately by the invigilator. You must complete the details of Name, Roll number, Test name/Id and name of the examination on the Answer-Sheet carefully before you actually start attempting the questions. You must also put your signature on the Answer-Sheet at the prescribed place. These instructions must be fully complied with, failing which, your Answer-Sheet will not be evaluated and you will be awarded 'ZERO' mark.
- (6) Answer must be shown by completely blackening the corresponding circles on the Answer-Sheet against the relevant question number by **pencil or Black/Blue ball pen** only.
- (7) A machine will read the coded information in the OMR Answer-Sheet. In case the information is incompletely/different from the information given in the application form, the candidature of such candidate will be treated as cancelled.
- (8) The Answer-Sheet must be handed over to the Invigilator before you leave the Examination Hall.
- (9) Failure to comply with any of the above Instructions will make a candidate liable to such action/penalty as may be deemed fit.
- (10) Answer the questions as quickly and as carefully as you can. Some questions may be difficult and others easy. Do not spend too much time on any question.
- (11) Mobile phones and wireless communication device are completely banned in the examination halls/rooms. Candidates are advised not to keep mobile phones/any other wireless communication devices with them even switching it off, in their own interest. Failing to comply with this provision will be considered as using unfair means in the examination and action will be taken against them including cancellation of their candidature.
- (12) No rough work is to be done on the Answer-Sheet.
- (13) No candidate can leave the examination hall before completion of the exam.

NAME OF CANDIDATE:.....
DATE :..... CENTRE CODE :
ROLL No

DO NOT OPEN THIS TEST BOOKLET UNTIL YOU ARE TOLD TO DO SO

(E) No interchange required

18. In the question below, four words are given, two of which may or may not share a synonymous or antonymous relationship. From the given options, choose the one that provides the correct pair of synonyms or antonyms.
- | | |
|----------------------|-------------|
| 1. capricious | 2. fickle |
| 3. erratic | 4. flighty |
| (A) 1 and 2 | (B) 2 and 3 |
| (C) 2 and 4 | (D) 3 and 4 |
| (E) All are synonyms | |

Directions: (19-23): In the question given below, a set of sentences is given, which when properly sequenced, form a coherent paragraph. Arrange the sentences in the correct sequence, and answer the questions that follow.

P. It's crucial that African countries diversify their wheat sources for two key reasons.

Q. Given some African countries' dependence on Russian wheat, it could've influenced how they voted on the two United Nations General Assembly resolutions concerning Russia's invasion of Ukraine.

R. Not having enough brings the threat of hunger and political instability.

S. First, wheat forms an important component of diets.

T. Second, Africa's dependency on Russian wheat imports will influence key political and military decisions.

19. Which of the following would be the FIRST statement after rearrangement?
- | | |
|-------|-------|
| (A) P | (B) R |
| (C) Q | (D) S |
| (E) T | |
20. Which of the following would be the SECOND statement after rearrangement?
- | | |
|-------|-------|
| (A) P | (B) R |
| (C) Q | (D) S |
| (E) T | |
21. Which of the following would be the THIRD statement after rearrangement?
- | | |
|-------|-------|
| (A) P | (B) R |
| (C) Q | (D) S |
| (E) T | |
22. Which of the following would be the FOURTH statement after rearrangement?
- | | |
|-------|-------|
| (A) P | (B) R |
| (C) Q | (D) S |
| (E) T | |
23. Which of the following would be the FIFTH statement after rearrangement?
- | | |
|-------|-------|
| (A) P | (B) R |
| (C) Q | (D) S |
| (E) T | |

Directions: (24-30): Read the following passage carefully and answer the questions that follow.

In early October 2013, the Nobel Prize committee was preparing to announce the winner of its award in physics. The leading candidate as pretty much everyone knew was an 84-year-old Scottish scientist named Peter Higgs, who was not feeling nearly as joyful as you might think. Yes, he wanted to win the award, yes, he wanted to be recognised for his

pioneering insights into how subatomic particles build our universe. He just wanted to be recognised for it quietly. But as a theorist already heralded for his 1964 work predicting the Higgs boson (sometimes called the God particle), he knew he was pipe-dreaming. He could almost hear the thunder of microphone wielding journalists advancing on his Edinburgh apartment. So he made a preemptive decision: "I decided not to be home." On the morning of the announcement, Higgs crept out his back door, caught a bus to a nearby town, tucked himself into a pub and hunkered down with a medicinal pint of ale. Thus, when Higgs did win the Nobel (along with the French physicist François Englert), neither journalists nor fellow physicists could find him. "We don't know where he is," one University of Edinburgh colleague sadly explained to an exasperated reporter.

One is left to wonder if Frank Close chose the title *Elusive* as a reference to the glimmering subatomic particle of Higgs's theory — or to the theorist himself. As Close notes, "Peter Higgs has managed to avoid much of the pace of modern life." He does his best to avoid both email and cell phones. Close, a physicist himself and the author of numerous popular science books, is a long-time colleague and friend of Higgs's, but to research this volume he was forced to mail reminder letters to confirm appointments. Their conversations, not entirely revealing, were mostly conducted via Higgs's treasured landline phone. As a result, although his publisher describes *Elusive* as "the first major biography of Peter Higgs," Close seems less sure of that, describing his book as "not so much a biography of the man but of the boson named after him." Close's description is more accurate. The biographical facts add up to more of a brisk sketch than a richly detailed portrait. This is not to deny that there are moments of sharp and even bitter insight: Higgs's belief that his antisocial personality developed during a sickly and lonely childhood in northern England — "I grew up a rather isolated child"; his marriage and its failure because of his workaholic habits; a resulting, paralysing depression; his dedication to social justice causes, which at one point led him to suspect that he had "become an embarrassment" to some of his colleagues. After all, Higgs notes modestly, "The portion of my life for which I am known is rather small — three weeks in the summer of 1964."

It is those three weeks that anchor the real story in this book, a clear, vivid and occasionally even beautiful portrait of a scientific breakthrough: the tale of how a relatively obscure Scotland-based physicist developed a stunning theory, one that would help illuminate the invisible, particulate web that holds our universe together. And how in the following decades, the research community would argue, debate, build and expand on his idea, setting out on a quest to confirm the existence of the Higgs boson and with it our own understanding of the universe. At a basic level, Higgs's theory belongs to a fundamental and puzzling question: Where does the mass of the universe come from? Using the known rules of physics, from electromagnetism to quantum mechanics, Higgs raised the possibility of an unstable subatomic particle that, through a series of fizzing interactions, could lend mass to other particles. He predicted this particle would be a boson — a notably massive subatomic particle that helps hold matter together — and that it would exist in an energy field that enabled the interactions. Higgs suggested a path to confirming the existence of the boson and the eventual measurement of its decay products. In doing so, Close writes, the theory issued a subtle challenge:

"Is this just a clever piece of mathematics or does nature really work this way?"

Close uses that question as a launching point, taking the reader through much of the history of particle physics and introducing the key players, the insights by others in the field who moved the ideas forward and the eventual decision to build a machine in Switzerland — the Large Hadron Collider — to test the possibilities. The LHC would find confirmation for the boson's decay products in 2024. Close brings to this story an insider's knowledge and a combat-ready willingness to defend Higgs against his occasional critics, at one point dismissing the high-profile British physicist Stephen Hawking as a man with a "singular genius for playing the media." In other words, this is a very human telling of the ways that we've figured out at least some of the mysteries of our universe since the mid-20th century. "What does the discovery reveal about the cosmos and our place in the universe?" Close wonders, and he ends his book on a note of additional mystery, reminding us that there are great achievements in physics to come and that tantalising questions still shine in front of us, their answers still out of reach, ever elusive.

24. As per the passage, which of the following statements is TRUE?
 (A) Higgs was loved by his colleagues.
 (B) Higgs wanted to be recognised quietly for his pioneering insights into subatomic particles into how subatomic particles build our universe.
 (C) Frank Close was awarded a Nobel Prize in physics.
 (D) Close admires Stephen Hawking.
 (E) Elusive is an autobiography of Peter Higgs.
25. According to the passage, why did Frank Close choose the title Elusive for Higgs's biography?
 (A) As a reference to the glimmering subatomic particle.
 (B) As a result of Higgs's preemptive decision.
 (C) As a reference to the theorist itself.
 (D) Both options (A) and (B)
 (E) The reason is not explicitly stated in the passage.
26. Why is Close's description about his book ELUSIVE considered more accurate?
 1. He was forced to mail reminder letters to confirm appointments with Higgs.
 2. His conversations with Higgs were not entirely revealing.
 3. There were moments of sharp and bitter insights into Higgs's life.
 (A) Only 1 (B) Only 2
 (C) Only 3 (D) Only 1 and 2
 (E) Only 2 and 3
27. Which theory issued a subtle challenge as per Close's book Elusive?
 (A) Higgs's theory that would help illuminate the invisible, particulate web that holds our universe together and find out where its mass came from.
 (B) Higgs's suggestion of a path to measure the existence of the boson and eventual measurement of its decay products.
 (C) Higgs raising the possibility of an unstable atomic particle.
 (D) The development of the Large Hadron Collider.
 (E) None of the above.
28. As per the passage, which of the following is/are incorrect about the Large Hadron Collider?

1. The LHC was built to test the possibilities of Close's theory.
 2. The LHC would find confirmation of the boson's decay products in 2024.
 3. The LHC was built in Switzerland.
 (A) Only 1 (B) Only 2
 (C) Only 3 (D) Only 2 and 3
 (E) All of 1, 2 and 3

29. Which of the following is closest in meaning to the word 'preemptive' as used in the passage?
 (A) prejudiced (B) abnormal
 (C) absurd (D) precautionary
 (E) temporary
30. Which of the following is opposite in meaning to the word 'tantalising' as used in the passage?
 (A) weary (B) dizzying
 (C) varied (D) aligned
 (E) adverse

Quantitative Aptitude

31. Rahul melted a solid cylinder of radius of 24 cm and height equal to 108 cm and recast it into 'n' identical solid spheres of radius 12 cm. Find the value of 'n'.
 (A) 27 (B) 26
 (C) 25 (D) 24
 (E) 28
32. 'A' and 'B' started a business by investing ₹5,000 and ₹8,000 respectively. After 18 months, 'A' and 'B' increased their investment by 40% and by ₹'Y', respectively such that after 3 years, the ratio of profit shares of 'A' and 'B' was 2:3, respectively. What is the value of 'Y'?
 (A) 2500 (B) 2000
 (C) 1800 (D) 2100
 (E) 3000
33. In a class there are 14 boys and 12 girls. Average age of each boy and each girl is 21 years and 17 years, respectively. If the sum ages of all the boys, girls and a teacher whose age is 'x' years is 540 years, then find the value of 'x'.
 (A) 42 (B) 40
 (C) 44 (D) 46
 (E) 38
34. If 50% of 'A' is equal to 30% of 'B' and $(B - A) = 200$, then find the value of $\{(3B - A)/A\}$.
 (A) 8 (B) 2
 (C) 6 (D) 4
 (E) None of these
35. A shirt was marked 50% above its cost price and then sold after giving two successive discounts of 25% and ₹25, respectively by making a profit of ₹20. What is the cost price of the shirt?
 (A) ₹275 (B) ₹400
 (C) ₹360 (D) ₹320
 (E) ₹300
36. Rs. 26,000 when invested at simple interest of 'r%' p.a. for 5 years gives an interest of Rs. 26,000. Find the interest earned when Rs. 30,000 is invested at compound interest (compounded annually) of 'r%' p.a., for 2 years.
 (A) Rs. 6,300 (B) Rs. 13,200
 (C) Rs. 19,200 (D) Rs. 14,400
 (E) None of these

37. 'A' alone can complete a work in 30 days. 'A' and 'B' together can complete the same work in 20 days while 'B' and 'C' takes 15 days to complete it. Find the time taken by 'C' to complete the whole work alone.
(A) 15 days (B) 20 days
(C) 25 days (D) 30 days
(E) None of these
38. Before servicing, a car runs at a speed of 35 km/hr while after servicing, it runs at a speed of 70 km/h. After servicing the car covers a certain distance in 5 hours. How much time would the car have taken to cover the same distance when it was not serviced?
(A) 10 hours (B) 11 hours
(C) 12 hours (D) 9 hours
(E) 8 hours
39. Two boats which travel at the same speed in still water are 180 km apart. They travel towards each other in a stream which flows at 'y' km/h. If they meet after 3 hours, then find the still water speed of each boat.
(A) 24 km/h (B) 20 km/h
(C) 28 km/h (D) 30 km/h
(E) Data insufficient.

Direction: (40-41): In the questions, two equations I and II are given. You have to solve both the equations to establish the correct relation between x and y and choose the correct option.

40. I. $x^2 - 15x + 50 = 0$ II. $y^2 + 40 = 13y$
(A) $x > y$ (B) $x < y$
(C) $x \leq y$ (D) $x \geq y$
(E) $x = y$ or the relationship cannot be established
41. I. $x^4 - 638 = 658$ II. $y^2 + 321 = 346$
(A) $x > y$ (B) $x < y$
(C) $x = y$ or the relationship cannot be established
(D) $x \geq y$ (E) $x \leq y$

Direction: (42-44): What approximate value will come in place of the question mark (?) in the following question?

(Note: You are not expected to calculate the exact value.)

42. 23.95% of 1099.99 + 59.86% of 2199.93 = ?
(A) 1584 (B) 1622
(C) 1489 (D) 1758
(E) 1214
43. $\{(40.11\% \text{ of } 199.99 - 59.95)\} / (11.95 + 18.99 - 25.95) = ?$
(A) 16 (B) 400
(C) 4 (D) 250
(E) 10
44. 15.99% of 99.91 - $59.99 + 39.94\%$ of 200 = ?
(A) 24 (B) 2
(C) 12 (D) 18
(E) 6

Direction: (45-50): What will come in the place of question mark (?) in the given expression?

45. $128^{(1/7)} + ? - 18 = \sqrt{121}$
(A) 29 (B) 31
(C) 27 (D) 33
(E) 25

46. 60% of $450 - 25 \times ? = 12^2 - 24$
(A) 6 (B) 8
(C) 5 (D) 12
(E) 10
47. $\{(49/84) + (30/84)\} \times 21 - (7/4) = ?$
(A) 18 (B) 20
(C) 15 (D) 24
(E) 16
48. $46 \div 15 - (21/15) + ? = 125$
(A) $(365/3)$ (B) $(370/3)$
(C) $(380/3)$ (D) $(280/3)$
(E) $(180/3)$
49. $\{4(\frac{1}{3}) + 5(\frac{2}{7})\} \times (\frac{126}{101}) = ?$
(A) 25 (B) 12
(C) 18 (D) 9
(E) 15
50. $1\frac{1}{3}\%$ of 600 + 15 = ? $-1\frac{3}{5}\%$ of 1000
(A) 29 (B) 49
(C) 39 (D) 59
(E) 19

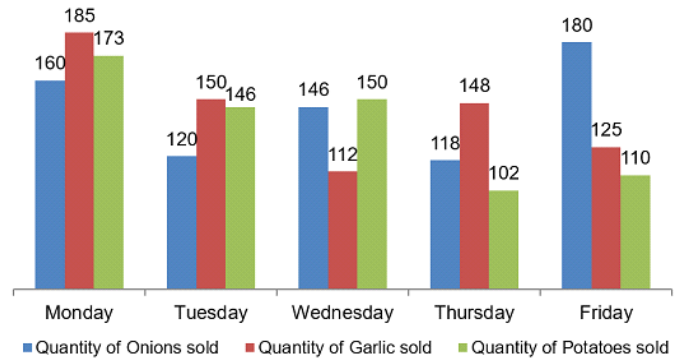
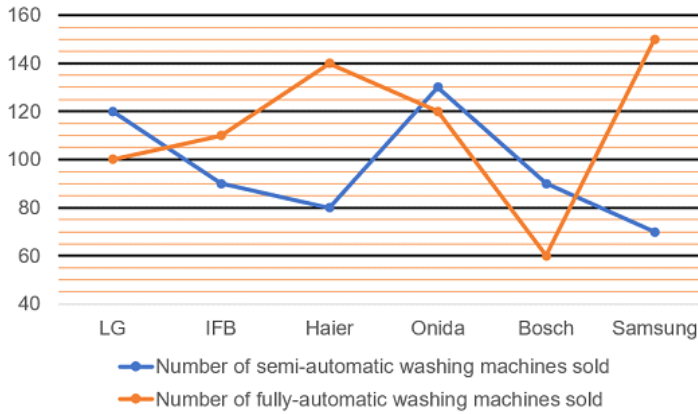
Direction: (51-53): What will come in place of the question mark (?) in the following series?

51. 150, 158, 131, 195, 70, ?
(A) 316 (B) 296
(C) 286 (D) 312
(E) 254
52. 123, 136, 162, ?, 253, 318
(A) 214 (B) 211
(C) 231 (D) 201
(E) 209
53. 426, 423, 414, 387, ?, 63
(A) 306 (B) 327
(C) 318 (D) 316
(E) 298
54. The sum of two different numbers 'A' and 'B' is 64 and the difference between 'A' and 'B' is 16. What is the product of their least common multiple of 'A' and 'B' and highest common factor of 'A' and 'B'? (Note: $A > B$)
(A) 1024 (B) 900
(C) 840 (D) 960
(E) 1120

Directions: (55-60): Answer the questions based on the information given below.

The line graph given below shows the number of semi-automatic washing machines and number of fully-automatic washing machines of six different brands sold by a shop.

Note: Total number of washing machines sold of each brand = Number of semi-automatic washing machines sold + number of fully-automatic washing machines sold



55. Find the ratio between sum of number of semi-automatic washing machines sold of LG and Haier to total number of washing machines sold of Haier.
 (A) 10:11 (B) 3:7
 (C) 2:5 (D) 11:15
 (E) 3:4
56. Total number of Onida washing machines sold is how many more than the number of fully-automatic IFB washing machines sold.
 (A) 110 (B) 120
 (C) 140 (D) 150
 (E) 160
57. If number of semi-automatic washing machines sold of Whirlpool is 20% more than that of Samsung and total number of washing machines (semi automatic + fully automatic) sold of Whirlpool is 254, then find the number of fully-automatic washing machines sold of Whirlpool.
 (A) 140 (B) 150
 (C) 120 (D) 170
 (E) None of these
58. Find the average number of fully automatic washing machines sold of LG, Haier and Samsung.
 (A) 150 (B) 130
 (C) 120 (D) 100
 (E) 90
59. Sum of number of fully automatic washing machines sold of Haier and Bosch is how much percent of the number of fully automatic washing machines sold of LG?
 (A) 160% (B) 250%
 (C) 200% (D) 150%
 (E) 220%
60. If ratio between number of semi-automatic washing machines sold of IFB and Godrej is 3:11, then find the number of semi-automatic washing machines sold by Godrej.
 (A) 220 (B) 330
 (C) 440 (D) 110
 (E) None of these

Directions: (61-65): Answer the questions based on the information given below.

Given below in the bar graph is the information regarding the quantity (in kg) of onions, garlic and potatoes sold by a shop, on 5 consecutive days of a week.

61. If the selling price (per kg) of garlic and potato is ₹20 and ₹15, respectively, then what is the total amount earned by the shop by selling garlic and potatoes on Friday?
 (A) ₹4,350 (B) ₹4,150
 (C) ₹3,800 (D) ₹3,950
 (E) ₹4,500
62. The sum of quantities of onion and potatoes sold on Monday is how much percent more than the quantity of garlic sold on the same day?
 (A) 50% (B) 80%
 (C) 60% (D) 75%
 (E) 70%
63. What is the ratio of the quantity of garlic sold on Wednesday to the sum of quantities of potatoes sold on Wednesday and Thursday together?
 (A) 4:7 (B) 1:2
 (C) 3:7 (D) 4:9
 (E) 5:11
64. What is average quantity of onions sold on Wednesday, Thursday and Friday together?
 (A) 182 kg (B) 130 kg
 (C) 160 kg (D) 148 kg
 (E) 196 kg
65. If quantity of onion sold on Saturday is 30% more than that sold on Tuesday while the quantity of garlic sold on Saturday is 20% less than that sold on Tuesday, then find the sum of quantities of onion and garlic sold on Saturday.
 (A) 276 kg (B) 320 kg
 (C) 256 kg (D) 300 kg
 (E) 288 kg

Reasoning Aptitude

Directions: (66-70): Answer the following question based on the information given below.

Seven people, Jim, Bill, Drake, Cole, Tim, Jack and Kim, are posted in a bank at different designations. The designations in the bank, from the junior most to senior most are as follows: Clerk, Probationary Officer (PO), Assistant Manager (AM), Manager, Assistant General Manager (AGM), Deputy General Manager (DGM) and General Manager (GM).

Jack is three designations senior to Jim. Tim is senior to Jack. Bill is PO. Kim is three designations junior to Tim. Cole is junior to Drake. Cole is not AGM.

66. How many people are senior to Drake?
 (A) Four (B) Three
 (C) Two (D) One
 (E) None

67. Jim is ___ designation senior to Cole.
 (A) One (B) Two
 (C) Three (D) Four
 (E) None of these
68. ___ is posted as DGM.
 (A) Drake (B) Kim
 (C) Jack (D) Jim
 (E) None of the above
69. Who is posted as GM?
 (A) Jack (B) Drake
 (C) Kim (D) Tim
 (E) None of the above
70. Jack is ___ designations ___ to Kim.
 (A) Two, junior (B) Three, junior
 (C) Two, senior (D) Four, senior
 (E) None of the above

Directions: (71-75): Answer the questions based on the information given below.

Twelve persons (A, B, C, D, E, F, P, Q, R, S, T, and U) sit in two parallel rows equidistant from each other. Six persons (A, B, C, D, E, and F) sit in row 1 and face towards the north direction. Six persons (P, Q, R, S, T, and U) sit in row 2 and face south direction. Persons, who sit in Row 1, face the persons, who sit in Row 2 and vice-versa. Row 2 is in north or row 1.
 D sits 2nd to the left of F. Neither F nor D sits at any of the extreme ends. U doesn't sit adjacent to P. Two persons sit between Q and R, who doesn't face F. A sits to the left of B. Two persons sit between C and E, who faces P. P doesn't sit at extreme ends. S sits 2nd to the left of U.

71. If the person, who faces R, likes Guava, then, how many persons sit between B and the person, who likes Guava?
 (A) One (B) Two
 (C) None (D) Three
 (E) Four
72. If the person, who sits at extreme right end of row 1, likes Apple, then, what is the position of F, with respect to the person, who likes Apple?
 (A) Immediate left (B) 2nd to the left
 (C) 3rd to the left (D) 4th to the left
 (E) Cannot be determined
73. If the person, who sits 2nd to the right of Q, likes Oranges, then, who faces the person, who likes Oranges?
 (A) A (B) B
 (C) C (D) D
 (E) Cannot be determined
74. ___ sits 3rd to the left of the person, who faces T.
 (A) E (B) F
 (C) D (D) A
 (E) None of the above
75. Four of the following five are alike in a certain way based on a group, which among the following does not belong to that group?
 (A) T (B) B
 (C) U (D) S
 (E) C

Directions: (76-80): Answer the questions based on the information given below:

There are ten shelves M, N, O, P, Q, R, S, T, U and V in an Almirah such that bottommost shelf is numbered as 1 while the topmost shelf is numbered as 10 but not necessarily in same order.
 There are four shelves between N and R. V is neither a prime numbered shelf nor above R. N is two shelves below O. There are three shelves between R and V.
 U is one shelf below P. O is a prime numbered shelf. Q is not adjacent to R. M is immediately above P and immediately below T.

76. How many shelves are above M?
 (A) Nine (B) Six
 (C) Eight (D) Seven
 (E) None of the above
77. ___ is one shelf below Q.
 (A) S (B) O
 (C) V (D) N
 (E) None of the above.
78. Which is the bottommost shelf?
 (A) R (B) P
 (C) S (D) U
 (E) None of the above.
79. How many shelves are there between S and M?
 (A) Two (B) Three
 (C) None (D) Four
 (E) None of the above
80. Which shelf is three shelves below V?
 (A) M (B) N
 (C) P (D) U
 (E) None of the above

Directions: (81-85): Answer the following question on the basis of the information given below.

Even number of people less than 14 is sitting along a circular table such that all are facing towards the centre. No seat is vacant.

B is sitting third to the right of A. C is sitting adjacent to B. As many people are sitting between A and D (from the left of A) as between A and C (from the right of A). F is sitting exactly in the middle of A and D (from the left of A). Number of people sitting between F and E, from either left or right of F, is an odd number. Six people are sitting between C and E, when counted from the right of C. Either three or no one is sitting between E and D, when counted from the right of E. G is sitting third to the right of H. Neither H nor G is sitting adjacent to B.

81. H is sitting ___ to the right of A.
 (A) Third (B) Fourth
 (C) Fifth (D) Sixth
 (E) None of the above
82. How many people are sitting between E and A, when counted from the right of E?
 (A) Eight (B) Two
 (C) Five (D) Six
 (E) None
83. ___ is sitting third to the left of C.
 (A) H (B) D
 (C) F (D) E
 (E) None of the above
84. D is sitting ___ to the ___ of H.

- (A) Fifth, left (B) Seventh, left
(C) Seventh, right (D) Sixth, left
(E) None of the above

85. How many people are sitting between B and G, when counted from the left of B?
(A) Three (B) Four
(C) Five (D) Six
(E) None of the above

Directions: (86-89): Answer the questions based on the information given below:

T Y * 6 % K A & @ 4 5 8 Q T S F B M € 2 1 ¥ L S Z X
3 9 H K L ©

86. How many such numbers are there which are immediately preceded by prime numbers?
(A) Three (B) One
(C) Four (D) Two
(E) None
87. In the given series, if all the symbols, which are immediately succeeded by even numbers, are removed, then which element is twelfth from the left end?
(A) Q (B) S
(C) T (D) F
(E) None of the above
88. Find the odd one out.
(A) Y6% (B) A@4
(C) 8TS (D) B€2
(E) ¥LZ
89. What is the sum of the numbers between "K" and "¥"?
(A) 21 (B) 20
(C) 17 (D) 19
(E) None of the above

Direction: (90-91): In the question below some statements are given followed by three conclusions I, II and III. You have to take the given statements to be true even if they seem to be at variance with commonly known facts. Read all the conclusions and then decide which of the given conclusion definitely follows from the given statements, disregarding commonly known facts.

90. **Statements:** All Sun is Round.
Some Round is Moon.
No Moon is Earth.
Conclusion: I. All Sun can be Moon.
II. Some Round is not Earth.
III. Some Earth is Sun.
(A) Only conclusion II follows
(B) Only conclusion I and conclusion II follow.
(C) Only conclusion I follows
(D) Only conclusion II and conclusion III follow.
(E) None of the conclusions follow
91. **Statements:** Some Wooden is Road.
No Pavement is Root.
Only a few Wooden is Pavement.
Conclusion: I. All Road can be Wooden.
II. No Road is Root.
III. Some Wooden is not Root.
(A) Only conclusion II follows
(B) Only conclusion I and conclusion III follow.
(C) Only conclusion I follows
(D) Only conclusion II and conclusion III follow.
(E) None of the conclusion I, II and III follow

Directions: (92-93): Answer the questions based on the information given below.

In an exam, Rohit scored different marks in six subjects (Maths, Science, English, Hindi, Computer and EVS). His marks in Hindi is more than Computer but less than Science. Marks in computer is more than English. Marks in at least three subjects is less than EVS. Marks in Hindi is less than only one subject. Marks in English is not the lowest. (All the marks are in Integer and not in decimal)

92. Rohit scored third lowest marks in which subject?
(A) Maths (B) EVS
(C) English (D) Computer
(E) None of the above.
93. If marks scored by Rohit in EVS, is 88, then marks scored by Rohit in Maths can be _____.
(A) 87 (B) 89
(C) 86 (D) 85
(E) None of the above
94. In the question, assuming the given statements to be true, find which of the following conclusion(s) among the three conclusions is/are true and then give your answer accordingly.
Statements: $R \geq U \geq S \geq T = K$, $L < O < T$, $R \leq P \leq M < U$
Conclusion: I. $O \leq M$ II. $K \leq P$
III. $U > L$
(A) Only conclusions I and III are true.
(B) Only conclusions I and II are true.
(C) Only conclusion I is true.
(D) Only conclusion II and III are true.
(E) None of the conclusions are true.
95. In the question, assuming the given statements to be true, find which of the following conclusion(s) among the three conclusions is/are true and then give your answer accordingly.
Statements: $R \geq L > T \geq M$; $M < S < O$; $R < I < K$
Conclusion: I. $K > M$ II. $O \geq T$
III. $L \geq M$
(A) Only conclusion I is true.
(B) Only conclusion I and II are true.
(C) Only conclusion I and III are true.
(D) Only conclusion II and III are true.
(E) None of the above.

Directions: (96-97): Answer the following question on the basis of the information given below.

There are eight members, P, Q, R, S, T, U, V and W in a family of three generations. No single person in the family is a parent.
P is the grandfather of R. R is the wife of T. P and his wife have no siblings. Q is the mother of S. Q is not married to P. S is not married. U is the father of V. V has only one sister. Q is the only child of W.

96. How is V related to W?
(A) Granddaughter (B) Grandfather
(C) Brother (D) Grandmother
(E) Cannot be determined
97. U is ____ of W.
(A) Grandson (B) Father
(C) Son-in-law (D) Son
(E) None of the above

Directions: (98-99): Answer the questions based on the information given below.

Seven points (K, M, J, N, O, P, and Q) are drawn on a sheet of paper. Point P is 13cm west of Point M. Point Q is 11cm south of Point P, which is 6cm west of Point J. The distance between Point K and Point Q is 2cm less than the distance between Point M and Point J. Point K is in west of Point Q. Point N is 5cm north of Point O, which is 6cm north of Point K.

98. Point N is in _____ direction of Point Q.
 (A) North-East (B) North-West
 (C) South-West (D) South-East
 (E) North

99. The distance between Point K and Point Q is equal to the distance between Point O and _____.
 (A) Point K (B) Point M
 (C) Point J (D) Point N
 (E) None of the above
100. How many letter-pairs are there in the word 'SRILANKA', which has as many letters between them in the word as in the English alphabetical series?
 (A) Two (B) Three
 (C) Four (D) None
 (E) None of the above

Space for rough work

DAILY SLIDES (SUBJECT WISE)

53 Different Slides Brand Promotion Highly Engaging

Price: ₹ 5,999/- for 6 Month (10 Slides)

CET STUDY MATERIAL KIT

4 Books 1,400+ Pages 7,250+ Questions

Price: ₹ 11,999/- Per Book

DNA DAILY NEWS ANALYSIS

10 Important News Brand Promotion Mobile Screen Friendly

Price: ₹ 8,499/- for 6 Month

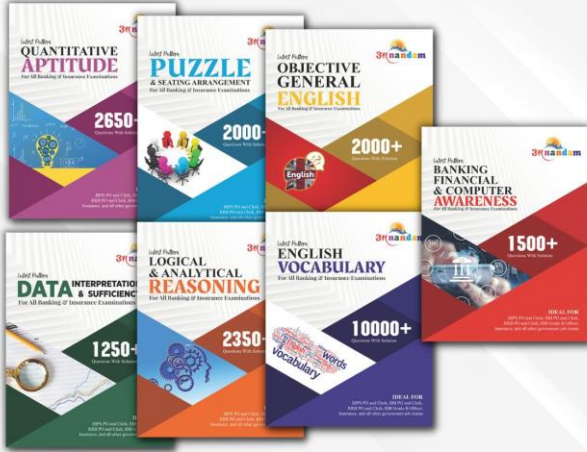
BEST SELLER

CA/GA BOOKLET

5 General Awareness Mock Tests
 50 Questions Per Set
 Latest Pattern Based
 Brand Promotion

Price: ₹ 7,999/- for 6 Month

BANK STUDY MATERIAL KIT



7 Books | 2,449+ Pages | 15,000+ Questions

Price: ₹ 14,999/- Per Book

SSC STUDY MATERIAL KIT



6 Books | 2,149+ Pages | 13,500+ Questions

Price: ₹ 14,999/- Per Book

TESMUS
...keeps you ahead

MONTHLY CURRENT AFFAIRS BOOSTER

ONE LINERS | BRANDING | PROMOTION



www.tesmus.com

TESMUS
...keeps you ahead

MONTHLY CURRENT AFFAIRS MAGAZINE

CURRENT AFFAIRS | BRAND PROMOTION | MARKETING



www.tesmus.com

English Language

1. **Answer: (B)**
(b) is the right answer. In B, replace the plural verb ARE with the singular verb IS as the subject of the sentence is in singular form. The sentence talks about social media outrage being fuelled by intolerance.
2. **Answer: (D)**
In D, replace the singular verb HAS with the plural HAVE as the subject CHILDREN is plural. Thus, D is the right answer.
3. **Answer: (A)**
In A, replace the singular verb HAS with the plural HAVE as the subject STATES is plural. Thus, A is the right answer.
4. **Answer: (C)**
In C, replace the noun ENVIRONMENT with the adjective ENVIRONMENTAL to modify the noun REFUGEES. So, C is the correct answer.
5. **Answer: (B)**
We need a verb in past participle form to fit in the BE + VERB passive voice construction. The sentence seeks to convey that specific and long lasting provisions should be passed to combat hate speech. ENACTED (passed) and CONSTITUTED (created legally) will fit here contextually. Thus, (b) is the right answer.
Destined - certain of meeting/ happening. Insured - legally entitled to receive benefits.
6. **Answer: (D)**
We need a verb in base form to fit in the SHOULD + NOT + VERB active voice construction. The sentence seeks to convey that the life and health of workers should not be ignored due to the firework industry's contribution to the country's economy. ABSOLVE/RELIEVE (free from guilt or obligation) will fit here contextually. Thus, (d) is the right answer.
Accolade - praise. Obfuscate - make something less clear.
7. **Answer: (C)**
We need a verb in base form to follow the modal verb COULD. The sentence talks about the disoriented view of GDP data revealing stuff that could weaken economic recovery. UNDERMINE and DEBILITATE both mean weaken and will fit here. Thus, (c) is the right answer.
Revoke - cancel. Denounce - criticise.
8. **Answer: (B)**
We need a past verb form to modify the noun DISTRIBUTION. The sentence tells us that the lack of internet connectivity in rural areas HINDERED (obstructed) the distribution of covid-19 vaccines and government schemes. So, B is the correct answer.
Rendered - provided. Obstruct - block. Restraint (noun) - control. Impeding - hindering.
9. **Answer: (C)**
The sentence tells us how we humans are suspicious (distrustful) of our technologies (machinery) as we are intrigued by the possibilities (potential applications) that they open up. C is incorrectly spelled. The correct spelling of the word is FASCINATED (intrigued; curious). Thus, C is the right answer.
10. **Answer: (A)**
The sentence tells us that as per a renowned Indian CYTOGENETICIST (cell specialist) and bee expert, beekeeping has the POTENTIAL (capacity) to raise resources equal to the REVENUES (incomes) of the Indian Railways. The use of IMMINEENT (immediate, impending) is incorrect here and should be replaced with EMINENT (notable). So, A is the correct answer.
11. **Answer: (D)**
The sentence tells us how not all countries have the same capability (capacity) to reduce (decrease) emissions, measure and report progress (advancement), or increase preparation against climate change. D is incorrectly spelled. The correct spelling of the word is RESILIENCE. Thus, D is the right answer.
12. **Answer: (D)**
(d) is the right answer. We need to replace OVERLOOK with OVERLOOKED as we need a verb in past participle form to fit in the ARE + VERB passive voice construction. The sentence seeks to convey how the simple ideas that are ignored can give rise to great discoveries.
13. **Answer: (B)**
The sentence tells us how India has witnessed (experienced) huge (significant) growth in the prevalence (commonness) of phones since costs have dropped (fallen). We need to interchange the verbs DROPPED and WITNESSED as the sentence talks about a fall in costs. Thus, B is the right answer.
14. **Answer: (C)**
The sentence tells us how market forces have been moving (driving) the sector (industry) in the right direction but the government needs to step in (intervene) to help (assist). We need to interchange the verb HELP with the noun SECTOR, as we need a noun to be modified by the definite article THE, and a base form verb to fit in the TO + VERB infinitive construction. Thus, C is the right answer.
15. **Answer: (E)**
The sentence tells us how we are heading (moving) into a post-antibiotic era (period) where common (general) infections could once again be deadly (fatal). All the words are correctly placed in the sentence. Thus, E is the right answer.
16. **Answer: (B)**
The sentence tells us how we are failing (proving to be unsuccessful) to treat (cure) infections and patients are forced (compelled) to stay longer in care facilities to overcome (recover from) them. We need to interchange the verbs FORCED with TREAT, as we need a past participle verb to fit in the ARE + VERB passive voice construction, and a base form verb to fit in the TO + VERB infinitive construction. Thus, B is the right answer.
17. **Answer: (C)**
The sentence tells us how the New York meeting is perfectly timed to escalate (increase the focus of) the issue (matter) to a level that befits (is more suitable for) the magnitude (intensity) of the problem. We need to interchange the verb BEFITS with the noun ISSUE, as we need a noun to be modified by the definite article THE. Thus, C is the right answer.
18. **Answer: (E)**
CAPRICIOUS means given to sudden or unaccountable changes in mood or behaviour. FICKLE, ERRATIC and FLIGHTY are its synonyms. Thus, E is the right answer.
- Directions sol: (19-23):**
PSRTQ is the final order. P begins the passage by introducing the subject -- the need for African countries to diversify their wheat sources. S comes next by stating the first reason for doing so -- wheat being an important component of diets. R follows S by stating that not having enough wheat could result in hunger and political instability. T comes next by giving the second reason for the need for wheat diversification -- the impact on political and military decisions. Q concludes the passage by further substantiating the second reason -- Africa's reliance on Russian wheat could have impacted its voting on

the UN reAnswers concerning Russia's invasion of Ukraine.

19. **Answer: (A)**
 20. **Answer: (D)**
 21. **Answer: (B)**
 22. **Answer: (E)**
 23. **Answer: (C)**
 24. **Answer: (B)**

Refer to the lines: "Yes, he wanted to win the award, yes, he wanted to be recognised for his pioneering insights into how subatomic particles build our universe. He just wanted to be recognised for it quietly." From the above lines, we can conclude that option (b) is the right answer.

(a) is not true. Refer to the lines: "I grew up a rather isolated child"; his marriage and its failure because of his workaholic habits; a resulting, paralysing depression; his dedication to social justice causes, which at one point led him to suspect that he had "become an embarrassment" to some of his colleagues."

(c) is not true. Frank Close was not awarded a Nobel Prize as per the passage.

(d) is not true. Close is ready to defend Higgs against his critics, including Stephen Hawking. Refer to the lines: "Close brings to this story an insider's knowledge and a combat-ready willingness to defend Higgs against his occasional critics, at one point dismissing the high-profile British physicist Stephen Hawking as a man with a "singular genius for playing the media."

(e) is not true. As per the passage, Elusive is a biography of Peter Higgs, written by Frank Close.

25. **Answer: (E)**

(e) is the right answer. Refer to the lines: "One is left to wonder if Frank Close chose the title Elusive as a reference to the glimmering subatomic particle of Higgs's theory — or to the theorist himself." From the above lines, we can infer that the author of the passage is uncertain about the actual reason behind the title. ONE IS LEFT TO WONDER showcases the uncertainty in the author's tone.

Option (b) is irrelevant in context to the given question.

26. **Answer: (B)**

(b) is the right answer. Refer to the lines: "Their conversations, not entirely revealing, were mostly conducted via Higgs's treasured landline phone. As a result, although his publisher describes Elusive as "the first major biography of Peter Higgs," Close seems less sure of that, describing his book as "not so much a biography of the man but of the boson named after him." Close's description is more accurate." The above lines imply that Close's not so revealing conversations with Higgs was the reason why he considered his book Elusive as not much of a biography of Higgs but of the boson named after him.

1 and 3 are mentioned in the passage but they are incorrect in context to the given question.

27. **Answer: (A)**

(a) is the right answer. Cloze mentions Higgs's theory as a subtle challenge. Refer to the lines: "It is those three weeks that anchor the real story in this book, a clear, vivid and occasionally even beautiful portrait of a scientific breakthrough: the tale of how a relatively obscure Scotland-based physicist developed a stunning theory, one that would help illuminate the invisible, particulate web that holds our universe together." and "Close writes, the theory issued a subtle challenge: "Is this just a clever piece of mathematics or does nature really work this way?"

Option (a) and (b) are mentioned in the passage but they are just an elaboration of Higgs's actions and suggestions related to the theory.

Option (d) is incorrect in context to the given question.

28. **Answer: (D)**

(d) is the right answer. Refer to the lines: "Close uses that question as a launching point, taking the reader through much of the history of particle physics and introducing the key players, the insights by others in the field who moved the ideas forward and the eventual decision to build a machine in Switzerland — the Large Hadron Collider — to test the possibilities. The LHC would find confirmation for the boson's decay products in 2024." The above lines imply that 2 and 3 are correct, which makes D the right answer.

1 is incorrect as the LHC was built to test the possibilities of Higgs' theory not Close's.

29. **Answer: (D)**

(d) is the right answer. PREEMPTIVE means to act in advance. PRECAUTIONARY (action taken in advance to prevent the occurrence of something bad) will be its synonym.

Prejudiced - biased. Abnormal - not showing normal behaviour. Absurd - silly. Temporary - not permanent.

30. **Answer: (A)**

(a) is the right answer. TANTALISING means causing a feeling of interest or excitement. WEARY (lacking enthusiasm or strength) will be its antonym.

Dizzying - confusing. Varied - different. Aligned - adjusted in line. Adverse - not favourable.

Quantitative Aptitude

31. **Answer: (A)**

As the cylinder is recast into 'n' spherical balls

$$\text{So, } n \times \left(\frac{4}{3}\right) \times \pi \times r^3 = \pi \times R^2 \times h$$

Where, r = radius of spherical ball

R = radius of cylinder

h = height of cylinder

$$n \times \left(\frac{4}{3}\right) \times \pi \times 12 \times 12 \times 12 = \pi \times 24 \times 24 \times 108$$

$$\text{Or, } n = 27$$

32. **Answer: (B)**

Increased investment of 'A' = $5000 \times 1.4 = ₹7,000$

Then, ratio of profit shares of 'A' and 'B', respectively = $(5000 \times 18 + 7000 \times 18) : (8000 \times 18 + (8000 + Y) \times 18) = 2:3$

$$\text{Or, } (12000)/(16000 + Y) = 2/3$$

$$\text{Or, } 36000 = 32000 + 2Y$$

$$\text{Or, } Y = (36000 - 32000) \div 2$$

$$\text{Or, } Y = 2000$$

Hence, option b.

33. **Answer: (A)**

Sum of ages of all boys = $14 \times 21 = 294$

Sum of ages of all girls = $12 \times 17 = 204$

$$\text{So, } 294 + 204 + x = 540$$

$$\text{Or, } x = 540 - 498 = 42$$

Hence, option a.

34. **Answer: (D)**

ATQ;

$$B = 200 + A \dots \dots \dots (1)$$

Also, 50% of 'A' = 30% of 'B'

$$\text{Or, } 0.50 \times A = 0.30 \times B$$

$$\text{Or, } 0.5A = 0.3B$$

$$\text{Or, } 0.5A = 0.3 \times (200 + A) \text{ [From equation (1)]}$$

$$\text{Or, } 0.5A = 60 + 0.3A$$

$$\text{Or, } 0.2A = 60$$

$$\text{So, } A = 300$$

$$\text{And, } B = 200 + 300 = 500 \text{ [from equation (1)]}$$

$$\text{So, } \{(3B - A)/A\} = \{(3 \times 500 - 300)/300\} = (1200/300) = 4$$

Hence, option d.

35. **Answer: (C)**

Let the cost price of the shirt = ₹'100y'
 Then, marked price of the shirt = $100y \times 1.5 = ₹'150y'$
 Price of the shirt after first discount = $150y \times 0.75 = ₹'112.5y'$
 Final selling price of the shirt after second discount = ₹'(112.5y - 25)
 According to the question,
 $112.5y - 25 = 100y + 20$
 Or, $12.5y = 45$
 Or, $y = (45/12.5) = 3.6$
 So, cost price of the shirt = $100 \times 3.6 = ₹360$
 Hence, option c.

36. **Answer: (B)**

Let the rate of interest be 'r%'
 So, $\{(26000 \times r \times 5)/100\} = 2600$
 Or, $r = 2600/130$
 Or, $r = 20$
 Therefore, compound interest earned = $[(1.20)^2 - 1] \times 30000 = 0.44 \times 30000 = \text{Rs. } 13,200$
 Hence, option b.

37. **Answer: (B)**

Let the total amount of work be 60 units
 Efficiency of 'A' = $60/30 = 2$ units/day
 Combined efficiency of 'A' and 'B' = $60/20 = 3$ units/day
 Combined efficiency of 'B' and 'C' = $60/15 = 4$ units/day
 Therefore, efficiency of 'B' = $3 - 2 = 1$ unit/day
 Efficiency of 'C' = $4 - 1 = 3$ units/day
 Therefore, required time taken = $60/3 = 20$ days
 Hence, option b.

38. **Answer: (A)**

After servicing,
 Distance covered by the car = $70 \times 5 = 350$ km
 Required time taken = $350/35 = 10$ hours

39. **Answer: (D)**

Let the still water speed of the boat = 'x' km/h
 Then, speed of the boat which is travelling in upstream = $(x - y)$ km/h
 Speed of the boat which is travelling in downstream = $(x + y)$ km/h
 Since, the two boats are travelling towards each other. So, relative speed of one of the boats w.r.t. the other
 $= (x - y) + (x + y) = '2x'$ km/h
 So, $2x = 180/3 = 60$
 Or, $x = (60/2) = 30$
 Hence, option d.

40. **Answer: (E)**

From I:
 $x^2 - 15x + 50 = 0$
 Or, $x^2 - 10x - 5x + 50 = 0$
 Or, $x(x - 10) - 5(x - 10) = 0$
 Or, $(x - 5)(x - 10) = 0$
 So, $x = 10$ or $x = 5$
 From II:
 $y^2 + 40 = 13y$
 Or, $y^2 - 13y + 40 = 0$
 Or, $y^2 - 8y - 5y + 40 = 0$
 Or, $y(y - 8) - 5(y - 8) = 0$
 Or, $(y - 5)(y - 8) = 0$
 So, $y = 8$ or $y = 5$

x	Relationship	y
10	>	8
10	>	5
5	<	8
5	=	5

So, the relationship cannot be established.
 Hence, option e.

41. **Answer: (C)**

From I:
 $x^4 - 638 = 658$

$$x^4 = 658 + 638$$

$$x^4 = 1296$$

$$x = +6, -6$$

From II:

$$y^2 + 321 = 346$$

$$y^2 = 346 - 321$$

$$y^2 = 25$$

$$y = +5, -5$$

x	Relation	y
6	>	5
6	>	-5
-6	<	5
-6	<	-5

So, the relationship between 'x' and 'y' cannot be established.

42. **Answer: (A)**

23.95% of $1099.99 + 59.86\%$ of $2199.93 = ?$
 24% of $1100 + 60\%$ of $2200 \sim ?$
 $0.24 \times 1100 + 0.60 \times 2200 \sim ?$
 $264 + 1320 \sim ?$
 $? \sim 1584$

Hence, option a.

43. **Answer: (C)**

$\{(40.11\% \text{ of } 199.99 - 59.95)/(11.95 + 18.99 - 25.95)\} = ?$
 $\{(40\% \text{ of } 200 - 60)/(12 + 19 - 26)\} \sim ?$
 $\{(0.4 \times 200 - 60)/(5)\} \sim ?$
 $\{(80 - 60)/(5)\} \sim ?$
 $20 \div 5 \sim ?$
 $? \sim 4$

Hence, option c.

44. **Answer: (E)**

15.99% of $99.91 - 59.99 + 39.94\%$ of $200 = ?^2$
 16% of $100 - 60 + 40\%$ of $200 \sim ?^2$
 $0.16 \times 100 - 60 + 0.4 \times 200 \sim ?^2$
 $16 - 60 + 80 \sim ?^2$
 $?^2 \sim 36$
 $? \sim \pm 6$

Hence, option e.

45. **Answer: (C)**

$128^{(1/7)} + ? - 18 = \sqrt{121}$
 $2^{(7 \times (1/7))} + ? - 18 = 11$
 $? = 11 - 2 + 18$
 $? = 27$

46. **Answer: (A)**

60% of $450 - 25 \times ? = 12^2 - 24$
 $270 - 25 \times ? = 144 - 24$
 $270 - 25 \times ? = 120$
 $25 \times ? = 270 - 120$
 $? = (150/25)$
 $? = 6$

Hence, option a.

47. **Answer: (A)**

$\{(49/84) + (30/84)\} \times 21 - (7/4) = ?$
 $\{(49 + 30) \div 84\} \times 21 - (7/4) = ?$
 $(79/84) \times 21 - (7/4) = ?$
 $(79/4) - (7/4) = ?$
 $? = (72/4)$
 $? = 18$

Hence, option a.

48. **Answer: (B)**

$46 \div 15 - (21/15) + ? = 125$
 $(46/15) - (21/15) + ? = 125$
 $(25/15) + ? = 125$
 $? = 125 - (5/3)$
 $? = 370/3$

Hence, option b.

49. **Answer: (B)**

$\{4 \left(\frac{1}{3}\right) + 5 \left(\frac{2}{7}\right)\} \times \left(\frac{126}{101}\right) = ?$
 $? = \{(13/3) + (37/7)\} \times (126/101) = \{(13 \times 7 + 37 \times 3)/21\} \times (126/101) = \{(91 + 111)/21\} \times (126/101) = (202/21) \times (126/101) = 2 \times 6$

? = 12

Hence, option b.

50. **Answer: (C)**

$1\frac{1}{3}\%$ of 600 + 15 = ? - $1\frac{3}{5}\%$ of 1000

$(\frac{4}{300}) \times 600 + 15 = ? - (\frac{8}{500}) \times 1000$

$8 + 15 = ? - 16$

? = 39

51. **Answer: (C)**

$150 + 2^3 = 158$

$158 - 3^3 = 131$

$131 + 4^3 = 195$

$195 - 5^3 = 70$

$70 + 6^3 = 286$

Hence, option c.

52. **Answer: (D)**

$123 + 13 \times 1 = 136$

$136 + 13 \times 2 = 162$

$162 + 13 \times 3 = 201$

$201 + 13 \times 4 = 253$

$253 + 13 \times 5 = 318$

Hence, option d.

53. **Answer: (A)**

$426 - 3^1 = 423$

$423 - 3^2 = 414$

$414 - 3^3 = 387$

$387 - 3^4 = 306$

$306 - 3^5 = 63$

Hence, option a.

54. **Answer: (D)**

Given that,

$A + B = 64$ (1) And, $A - B = 16$ (2) Therefore,

'A' = $\{(64 + 16)/2\} = (80/2) = 40$

So, $B = 64 - 40 = 24$

Product of the L.C.M and H.C.F of given two numbers

= product of the two numbers

So, $A \times B = 24 \times 40 = 960$

Hence, option d.

Directions sol: (55-60):

Brands	Number of semi-automatic washing machines sold	Number of fully-automatic washing machines sold	Total number of washing machines sold
LG	120	100	220
IFB	90	110	200
Haier	80	140	220
Onida	130	120	250
Bosch	90	60	150
Samsung	70	150	220

55. **Answer: (A)**

Required ratio = $(120 + 80):220 = 200:220 = 10:11$

Hence, option a.

56. **Answer: (C)**

Required difference = $250 - 110 = 140$

Hence, option c.

57. **Answer: (D)**

Number of semi-automatic washing machines sold of Whirlpool = 120% of 70 = $1.2 \times 70 = 84$

Therefore, number of fully-automatic washing machines sold of Whirlpool = $254 - 84 = 170$

Hence, option d.

58. **Answer: (B)**

Required average = $\{(100 + 140 + 150)/3\} = (390/3) = 130$

Hence, option b.

59. **Answer: (C)**

Required Percentage = $\{(140 + 60)/100\} \times 100 = 200\%$

Hence, option c.

60. **Answer: (B)**

Number of semi-automatic washing machines sold by Godrej = $90 \times (11/3) = 330$

Hence, option b.

61. **Answer: (B)**

Total amount earned = $\text{₹}125 \times 20 + 110 \times 15 = 2500 + 1650 = \text{₹}4150$

Hence, option b.

62. **Answer: (B)**

Required percentage = $[(160 + 173 - 185) \div 185] \times 100$

$= (148/185) \times 100$

$= 80\%$

Hence, option b.

63. **Answer: (D)**

Required ratio = $112:(150 + 102) = 112:252 = 4:9$

Hence, option d.

64. **Answer: (D)**

Required average = $(146 + 118 + 180) \div 3 = 148 \text{ kg}$

Hence, option d.

65. **Answer: (A)**

Quantity of onions sold on Saturday = $120 \times 1.3 = 156 \text{ kg}$

Quantity of garlic sold on Saturday = $150 \times 0.8 = 120 \text{ kg}$

Therefore, required sum = $156 + 120 = 276 \text{ kg}$

Hence, option a.

Reasoning Aptitude

Directions sol: (66-70):

The final arrangement is as follows,

Designation	Person
GM	Tim
DGM	Jack
AGM	Drake
Manager	Kim
AM	Jim
PO	Bill
Clerk	Cole

66. **Answer: (C)**

Two people are senior than Drake.

Hence, option c.

67. **Answer: (B)**

Jim is two designations senior to Cole.

Hence, option b.

68. **Answer: (C)**

Jack is posted as DGM.

Hence, option c.

69. **Answer: (D)**

Tim is posted as GM.

Hence, option d.

70. **Answer: (C)**

Jack is two designation senior to Kim.

Hence, option c.

Directions sol: (71-75):

The final arrangement is as follows:

Row 2	U	R	S	P	Q	T
Row 1	C	A	D	E	F	B

71. **Answer: (D)**

If the person, who faces R, likes Guava, then,

Row 2	U	R	S	P	Q	T
Row 1	C	A (Guava)	D	E	F	B

A faces R.

Three persons sit between B and A.

Hence, option d.

72. **Answer: (A)**

If the person, who sits at extreme right end of row 1, likes Apple, then,

Row 2	U	R	S	P	Q	T
Row 1	C	A	D	E	F	B (Apple)

B likes Apple.
F sits immediate left of B.
Hence, option a.

73. **Answer: (D)**
If the person, who sits 2nd to the right of Q, likes Oranges, then,

Row 2	U	R	S (Oranges)	P	Q	T
Row 1	C	A	D	E	F	B

S likes Oranges
D faces S.
Hence, option d.

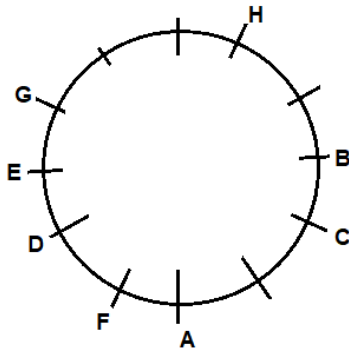
74. **Answer: (C)**
D sits 3rd to the left of the person, who faces T.
Hence, option c.
75. **Answer: (D)**
All persons sit at extreme ends of row except S.
Hence, option d.

Directions sol: (76-80):
the final table is given below:

Position	Shelf
10	R
9	S
8	Q
7	O
6	V
5	N
4	T
3	M
2	P
1	U

76. **Answer: (D)**
Seven shelves are above M.
77. **Answer: (B)**
O is one shelf below Q.
78. **Answer: (D)**
U is the bottommost shelf.
79. **Answer: (E)**
There are five shelves between S and M.
80. **Answer: (A)**
M is three shelves below V.

Directions sol: (81-85):
The final arrangement is as follows,



81. **Answer: (C)**
H is sitting fifth to the right of A.
Hence, option c.
82. **Answer: (B)**
Two people are sitting between E and A, when counted from the right of E.
Hence, option b.
83. **Answer: (C)**
F is sitting third to the left of C.
Hence, option c.

84. **Answer: (B)**
D is sitting seventh to the left of H.
Hence, option b.

85. **Answer: (D)**
Six people are sitting between B and G, when counted from the left of B.
Hence, option d.

Directions sol: (86-89):
Given series:
T Y * 6 % K A & @ 4 5 8 Q T S F B M € 2 1 ¥ L S Z X 3 9 H K L ©

86. **Answer: (A)**
There are three numbers (8, 1 and 9) which are immediately preceded by prime numbers.
Hence, option a.

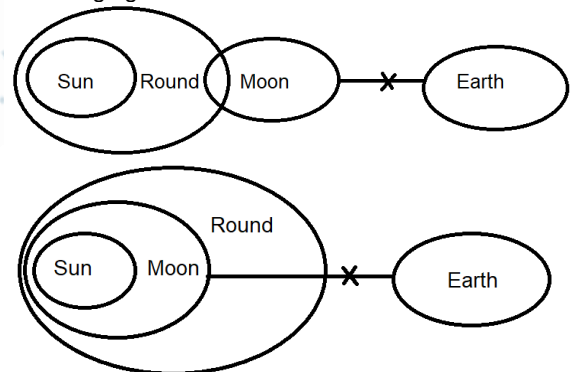
87. **Answer: (C)**
After removing the symbols which are immediately succeeded by even numbers, series become:
T Y 6 % K A & 4 5 8 Q T S F B M € 2 1 ¥ L S Z X 3 9 H K L ©

- Therefore, the element, which is twelfth from the left end, is: T
Hence, option c.

88. **Answer: (E)**
In all the above options, the 1st element is 2nd to the left of 2nd element and 2nd element is immediate left of 3rd element except in option e.
Hence, option e.

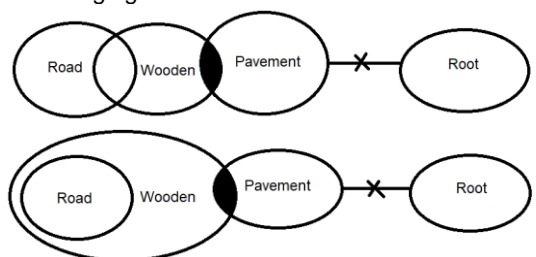
89. **Answer: (B)**
The sum of the numbers between "K" and "¥" is: (4 + 5 + 8 + 2 + 1) = 20
Hence, option b.

90. **Answer: (B)**
Following figures can be formed:



From the above figures, only conclusion I and conclusion II follow.
Hence, option b.

91. **Answer: (B)**
Following figure can be formed:



From the following figures, only conclusion I and conclusion III follow.

Directions sol: (92-93):
The final arrangement is given below:
Science > Hindi > EVS > Computer > English > Maths (Highest) (Lowest)

92. **Answer: (D)**
Rohit scored third lowest marks in Computer.
Hence, option d.
93. **Answer: (D)**

Marks scored by Rohit in EVS is 88, then marks scored by Rohit in Maths can be 85.

Hence, option d.

94. Answer: (D)

Given,

$R \geq U \geq S \geq T = K$, $L < O < T$, $R \leq P \leq M < U$

On combining the given statements,

$U > M \geq P \geq R \geq U \geq S \geq T = K > O > L$

I. $O \leq M$: False (As, $M \geq P \geq R \geq U \geq S \geq T = K > O$, so, $M > O$)

II. $K \leq P$: True (As, $P \geq R \geq U \geq S \geq T = K$, so, $P \geq K$)

III. $U > L$: True (As, $U > M \geq P \geq R \geq U \geq S \geq T = K > O > L$, so, $U > L$)

Only conclusions II and III are true.

Hence, option d.

95. Answer: (A)

Given,

$R \geq L > T \geq M$; $M < S < O$; $R < I < K$

On combining the given statements,

$K > I > R \geq L > T \geq M < S < O$

I. $K > M$: True (As, $K > I > R \geq L > T \geq M$, so, $K > M$)

II. $O \geq T$: False (As, $T \geq M < S < O$, so, the relation between O and T cannot be determined.)

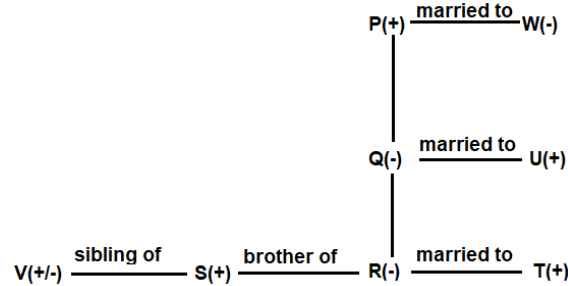
III. $L \geq M$: False (As, $L > T \geq M$, so, $L > M$)

Only conclusion I is true.

Hence, option a.

Directions sol: (96-97):

The following family tree can be drawn from the given statements:



96. Answer: (E)

V is either granddaughter or grandson of W.

Hence, option e.

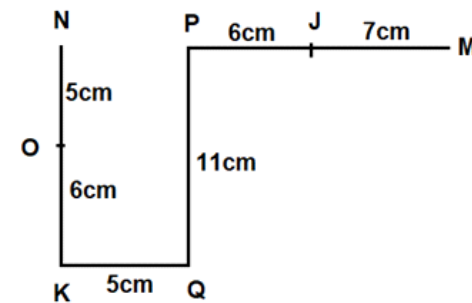
97. Answer: (C)

U is son-in-law of W.

Hence, option c.

Directions sol: (98-99):

We draw the following figure:



98. Answer: (B)

Point N is in North-West direction of Point Q.

Hence, option b.

99. Answer: (D)

The distance between Point K and Point Q is 5m.

The distance between Point O and Point N is 5m.

Hence, option d.

100. Answer: (C)

Given word: SRILANKA

There are four letter-pairs (SR, LN, NR and NS) in the word SRILANKA, which has as many letters between them in the word as in the English alphabetical series.

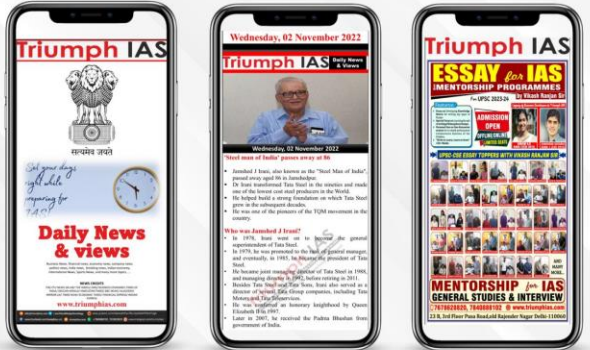
DAILY SLIDES (SUBJECT WISE)



53 Different Slides Brand Promotion Highly Engaging

Price: ₹ 5,999/- for 6 Month (10 Slides)

DNA DAILY NEWS ANALYSIS



10 Important News Brand Promotion Mobile Screen Friendly



Price: ₹ 8,499/- for 6 Month

CET STUDY MATERIAL KIT



4 Books 1,400+ Pages 7,250+ Questions

Price: ₹ 11,999/- Per Book



टेस्ट फॉर्म नंबर

अधिकतम अंक : 100
कुल प्रश्न : 100
निर्धारित समय : 60 मि.

उम्मीदवारों को निर्देश

प्रश्नों को हल करने से पहले निम्नलिखित निर्देशों को ध्यान से पढ़ें।

- (1) इस पुस्तिका में 100 प्रश्न हैं, जो कि कुल 3 भागों में विभाजित हैं।
भाग -(I) : English Language (30 प्रश्न)
भाग -(II) : Quantitative Aptitude (35 प्रश्न)
भाग -(III) : Reasoning Aptitude (35 प्रश्न)
- (2) सभी प्रश्न अनिवार्य हैं तथा सबके बराबर अंक हैं।
- (3) प्रश्नों को हल करना प्रारम्भ करने से पहले आपको इस पुस्तिका की जांच करनी चाहिए और यह सुनिश्चित करना चाहिए कि इसमें सभी पृष्ठ उपस्थित हैं और कोई पृष्ठ कम या बदला हुआ नहीं है। अगर आपको इस पुस्तिका में कोई दोष मिलता है, तो आपको तुरंत इसे बदलना होगा।
- (4) प्रत्येक प्रश्न में नकारात्मक अंकन होता है क्योंकि प्रत्येक गलत उत्तर के लिए 0.25 अंक काट दिया जाएगा।
- (5) आपको निरीक्षक द्वारा उत्तर पुस्तिका अलग से दी जाएगी। आपको प्रश्नों को हल करना प्रारम्भ करने से पहले अपना नाम, रोल नंबर, टेस्ट नाम /आईडी और/परीक्षा का नाम उत्तर-पुस्तिका पर सावधानीपूर्वक पूरा करना होगा। आपको उत्तर-पुस्तिका में निर्धारित स्थान पर अपना हस्ताक्षर भी करना होगा। इन निर्देशों का पूरी तरह से पालन किया जाना चाहिए, जिसको न करने पर आपकी उत्तर-पुस्तिका का मूल्यांकन नहीं किया जाएगा और आपको 'शून्य' अंक दिया जाएगा।
- (6) उत्तर केवल पेंसिल या ब्लैकब्लू बॉल पेन/ द्वारा उत्तरपुस्तिका प्रासंगिक प्रश्न संख्या के सम्बंधित गोले को पूरी तरह से ब्लैक करके - दिखाया जाना चाहिए।
- (7) OMR उत्तर पुस्तिका को एक मशीन द्वारा जांचा जायेगा। यदि किसी स्थिति में उपलब्ध जानकारी, आवेदन पत्र में दी गयी जानकारी से अलग पायी गयी, तो आवेदक का आवेदन निरस्त कर दिया जायेगा।
- (8) निरीक्षक की अनुमति मिलने के बाद ही कोई परीक्षा कक्ष छोड़ सकता है।
- (9) उपरोक्त में से किसी भी निर्देश का अनुपालन करने में विफल उम्मीदवार को उपयुक्त कार्यवाही/जुर्माना के लिए उत्तरदायी समझा जा सकता है।
- (10) जितनी जल्दी हो सके उतनी जल्दी और सावधानी से प्रश्नों का उत्तर दें। कुछ सवाल कठिन हो सकते हैं और दूसरे आसान हो सकते हैं। किसी भी प्रश्न पर ज्यादा समय नहीं बिताएं।
- (11) मोबाइल फोन और वायरलेस संचार उपकरण, परीक्षा कक्ष कमरे में पूरी तरह से प्रतिबंधित/हैं। कोई भी आवेदक अपने मोबाइल का या किसी वायरलेस संचार उपकरण को बंद करके भी अपने पास नहीं रख सकता। नियम का उल्लंघन करने पर आवेदक के विरुद्ध उचित कार्यवाही की जायेगी और उसका आवेदन भी निरस्त किया जा सकता है।
- (12) उत्तर-पत्र पर कोई रफ काम नहीं किया जाना चाहिए।
- (13) कोई भी उम्मीदवार परीक्षा पूरा होने से पहले परीक्षा कक्ष नहीं छोड़ सकता है।

परीक्षार्थी का नाम:.....
दिनांक:..... परीक्षा कोड
अनुक्रमांक:.....

जब तक आपको यह परीक्षण पुस्तिका खोलने को न कहा जाए तब तक न खोलें।

English Language

Direction (1-4): In the following question, one part of the sentence may have an error. Find out which part of the sentence has an error and select the appropriate option. If the sentence is free from error, select 'No Error'.

- (A) Social media outrage against
(B) brand campaigns are fuelled
(C) by intolerance
(D) to progressive values.
(E) No error
- (A) Although the numbers worldwide
(B) are still very low, the disease has been
(C) severe and some children
(D) has needed a liver transplant.
(E) No error
- (A) Several states has long-standing
(B) interests in Antarctica, which determine
(C) national policies about
(D) engaging with the continent.
(E) No error
- (A) That islands are losing landmass
(B) and creating thousands of
(C) environment refugees is
(D) not really breaking news.
(E) No error

Direction: (5-8): In the given sentence, a blank is given indicating that something is missing. From the given four options a combination of words would fit the blank thereby making it grammatically and contextually correct.

- It is important that specific and durable legislative provisions be _____ to combat hate speech.
1. enacted 2. destined
3. constituted 4. insured
(A) 1 and 2 (B) 1 and 3
(C) 2 and 3 (D) 3 and 4
(E) All fit
- The contribution of the fireworks industry to the country's economy should not _____ the industry of their responsibility to the life and health of workers and large sections of the society.
1. accolade 2. absolve
3. relieve 4. obfuscate
(A) 1 and 2 (B) 2 and 4
(C) 1 and 4 (D) 2 and 3
(E) All fit
- A disaggregated view of the GDP data reveals areas of concern that could _____ economic recovery.
1. revoke 2. denounce
3. undermine 4. debilitate
(A) 1 and 3 (B) 2 and 3
(C) 3 and 4 (D) 2 and 4
(E) All fit
- The lack of internet connectivity in rural areas _____ the distribution of covid-19 vaccines and government schemes.
(A) rendered (B) hindered
(C) obstruct (D) restraint
(E) impeding

Direction: (9-12): In the question below, a sentence is given with four words highlighted in bold. One of these four

words may either be wrongly spelt or inappropriate in the context of the sentence. Find out the word, which is wrongly spelt or inappropriate, if any. If all the words are correctly spelled and appropriate in the context of the sentence, mark (E) as your answer.

- We humans are as **suspicious** of our **technologies** as we are **fassinated** by the **possibilities** they open up.
(A) suspicious (B) technologies
(C) fassinated (D) possibilities
(E) All are correct
- In the 1960s, the **imminent** Indian **cytogeneticist** and bee expert, late G B Deodikar said that beekeeping has the **potential** to raise resources equal to the **revenues** of the Indian Railways.
(A) imminent (B) cytogeneticist
(C) potential (D) revenues
(E) All are correct
- Not all countries have same **capability** to reduce emissions, measure and report **progress**, or increase **resilience** against climate change.
(A) capability (B) reduce
(C) progress (D) resilience
(E) All are correct
- Great **discoveries** can **come** from simple ideas which **are** often **overlook**.
(A) discoveries (B) come
(C) are (D) overlook
(E) All are correct

Direction: (13-17): In the question below, a sentence is given with four words highlighted in bold. From the options, choose the pair of words that need to be interchanged to make the sentence grammatically and meaningfully correct.

- Like the rest of the world, India has **dropped** **huge** growth in the **prevalence** of phones, as accessibility has improved and costs have **witnessed**.
(A) dropped → huge (B) dropped → witnessed
(C) huge → prevalence (D) huge → witnessed
(E) No interchange required
- Market forces have so far been **moving** the **help** in the right direction, now it's time government **stepped** in to **sector**.
(A) moving → help (B) moving → stepped
(C) help → sector (D) stepped → sector
(E) No interchange required
- We are **heading** into a post-antibiotic **era**, where **common** infections could once again be **deadly**.
(A) heading → common (B) era → common
(C) era → deadly (D) common → deadly
(E) No interchange required
- We are **failing** to **forced** infections, and patients are **treat** to stay longer in care facilities to **overcome** them.
(A) failing → forced (B) forced → treat
(C) forced → overcome (D) treat → overcome
(E) No interchange required
- The meeting in New York is perfectly timed to **escalate** the **befits** to a level that **issue** the **magnitude** of the problem.
(A) escalate → befits (B) escalate → magnitude
(C) befits → issue (D) befits → magnitude

(E) No interchange required

18. In the question below, four words are given, two of which may or may not share a synonymous or antonymous relationship. From the given options, choose the one that provides the correct pair of synonyms or antonyms.
- | | |
|----------------------|-------------|
| 1. capricious | 2. fickle |
| 3. erratic | 4. flighty |
| (A) 1 and 2 | (B) 2 and 3 |
| (C) 2 and 4 | (D) 3 and 4 |
| (E) All are synonyms | |

Directions: (19-23): In the question given below, a set of sentences is given, which when properly sequenced, form a coherent paragraph. Arrange the sentences in the correct sequence, and answer the questions that follow.

P. It's crucial that African countries diversify their wheat sources for two key reasons.

Q. Given some African countries' dependence on Russian wheat, it could've influenced how they voted on the two United Nations General Assembly resolutions concerning Russia's invasion of Ukraine.

R. Not having enough brings the threat of hunger and political instability.

S. First, wheat forms an important component of diets.

T. Second, Africa's dependency on Russian wheat imports will influence key political and military decisions.

19. Which of the following would be the FIRST statement after rearrangement?
- | | |
|-------|-------|
| (A) P | (B) R |
| (C) Q | (D) S |
| (E) T | |
20. Which of the following would be the SECOND statement after rearrangement?
- | | |
|-------|-------|
| (A) P | (B) R |
| (C) Q | (D) S |
| (E) T | |
21. Which of the following would be the THIRD statement after rearrangement?
- | | |
|-------|-------|
| (A) P | (B) R |
| (C) Q | (D) S |
| (E) T | |
22. Which of the following would be the FOURTH statement after rearrangement?
- | | |
|-------|-------|
| (A) P | (B) R |
| (C) Q | (D) S |
| (E) T | |
23. Which of the following would be the FIFTH statement after rearrangement?
- | | |
|-------|-------|
| (A) P | (B) R |
| (C) Q | (D) S |
| (E) T | |

Directions: (24-30): Read the following passage carefully and answer the questions that follow.

In early October 2013, the Nobel Prize committee was preparing to announce the winner of its award in physics. The leading candidate as pretty much everyone knew was an 84-year-old Scottish scientist named Peter Higgs, who was not feeling nearly as joyful as you might think. Yes, he wanted to win the award, yes, he wanted to be recognised for his

pioneering insights into how subatomic particles build our universe. He just wanted to be recognised for it quietly. But as a theorist already heralded for his 1964 work predicting the Higgs boson (sometimes called the God particle), he knew he was pipe-dreaming. He could almost hear the thunder of microphone wielding journalists advancing on his Edinburgh apartment. So he made a preemptive decision: "I decided not to be home." On the morning of the announcement, Higgs crept out his back door, caught a bus to a nearby town, tucked himself into a pub and hunkered down with a medicinal pint of ale. Thus, when Higgs did win the Nobel (along with the French physicist François Englert), neither journalists nor fellow physicists could find him. "We don't know where he is," one University of Edinburgh colleague sadly explained to an exasperated reporter.

One is left to wonder if Frank Close chose the title *Elusive* as a reference to the glimmering subatomic particle of Higgs's theory — or to the theorist himself. As Close notes, "Peter Higgs has managed to avoid much of the pace of modern life." He does his best to avoid both email and cell phones. Close, a physicist himself and the author of numerous popular science books, is a long-time colleague and friend of Higgs's, but to research this volume he was forced to mail reminder letters to confirm appointments. Their conversations, not entirely revealing, were mostly conducted via Higgs's treasured landline phone. As a result, although his publisher describes *Elusive* as "the first major biography of Peter Higgs," Close seems less sure of that, describing his book as "not so much a biography of the man but of the boson named after him." Close's description is more accurate. The biographical facts add up to more of a brisk sketch than a richly detailed portrait. This is not to deny that there are moments of sharp and even bitter insight: Higgs's belief that his antisocial personality developed during a sickly and lonely childhood in northern England — "I grew up a rather isolated child"; his marriage and its failure because of his workaholic habits; a resulting, paralysing depression; his dedication to social justice causes, which at one point led him to suspect that he had "become an embarrassment" to some of his colleagues. After all, Higgs notes modestly, "The portion of my life for which I am known is rather small — three weeks in the summer of 1964."

It is those three weeks that anchor the real story in this book, a clear, vivid and occasionally even beautiful portrait of a scientific breakthrough: the tale of how a relatively obscure Scotland-based physicist developed a stunning theory, one that would help illuminate the invisible, particulate web that holds our universe together. And how in the following decades, the research community would argue, debate, build and expand on his idea, setting out on a quest to confirm the existence of the Higgs boson and with it our own understanding of the universe. At a basic level, Higgs's theory belongs to a fundamental and puzzling question: Where does the mass of the universe come from? Using the known rules of physics, from electromagnetism to quantum mechanics, Higgs raised the possibility of an unstable subatomic particle that, through a series of fizzing interactions, could lend mass to other particles. He predicted this particle would be a boson — a notably massive subatomic particle that helps hold matter together — and that it would exist in an energy field that enabled the interactions. Higgs suggested a path to confirming the existence of the boson and the eventual measurement of its decay products. In doing so, Close writes, the theory issued a subtle challenge:

"Is this just a clever piece of mathematics or does nature really work this way?"

Close uses that question as a launching point, taking the reader through much of the history of particle physics and introducing the key players, the insights by others in the field who moved the ideas forward and the eventual decision to build a machine in Switzerland — the Large Hadron Collider — to test the possibilities. The LHC would find confirmation for the boson's decay products in 2024. Close brings to this story an insider's knowledge and a combat-ready willingness to defend Higgs against his occasional critics, at one point dismissing the high-profile British physicist Stephen Hawking as a man with a "singular genius for playing the media." In other words, this is a very human telling of the ways that we've figured out at least some of the mysteries of our universe since the mid-20th century. "What does the discovery reveal about the cosmos and our place in the universe?" Close wonders, and he ends his book on a note of additional mystery, reminding us that there are great achievements in physics to come and that tantalising questions still shine in front of us, their answers still out of reach, ever elusive.

24. As per the passage, which of the following statements is TRUE?
 (A) Higgs was loved by his colleagues.
 (B) Higgs wanted to be recognised quietly for his pioneering insights into subatomic particles into how subatomic particles build our universe.
 (C) Frank Close was awarded a Nobel Prize in physics.
 (D) Close admires Stephen Hawking.
 (E) Elusive is an autobiography of Peter Higgs.
25. According to the passage, why did Frank Close choose the title Elusive for Higgs's biography?
 (A) As a reference to the glimmering subatomic particle.
 (B) As a result of Higgs's preemptive decision.
 (C) As a reference to the theorist itself.
 (D) Both options (A) and (B)
 (E) The reason is not explicitly stated in the passage.
26. Why is Close's description about his book ELUSIVE considered more accurate?
 1. He was forced to mail reminder letters to confirm appointments with Higgs.
 2. His conversations with Higgs were not entirely revealing.
 3. There were moments of sharp and bitter insights into Higgs's life.
 (A) Only 1 (B) Only 2
 (C) Only 3 (D) Only 1 and 2
 (E) Only 2 and 3
27. Which theory issued a subtle challenge as per Close's book Elusive?
 (A) Higgs's theory that would help illuminate the invisible, particulate web that holds our universe together and find out where its mass came from.
 (B) Higgs's suggestion of a path to measure the existence of the boson and eventual measurement of its decay products.
 (C) Higgs raising the possibility of an unstable atomic particle.
 (D) The development of the Large Hadron Collider.
 (E) None of the above.
28. As per the passage, which of the following is/are incorrect about the Large Hadron Collider?

1. The LHC was built to test the possibilities of Close's theory.
 2. The LHC would find confirmation of the boson's decay products in 2024.
 3. The LHC was built in Switzerland.
 (A) Only 1 (B) Only 2
 (C) Only 3 (D) Only 2 and 3
 (E) All of 1, 2 and 3

29. Which of the following is closest in meaning to the word 'preemptive' as used in the passage?
 (A) prejudiced (B) abnormal
 (C) absurd (D) precautionary
 (E) temporary
30. Which of the following is opposite in meaning to the word 'tantalising' as used in the passage?
 (A) weary (B) dizzying
 (C) varied (D) aligned
 (E) adverse

Quantitative Aptitude

31. राहुल ने 24 सेमी त्रिज्या और 108 सेमी के बराबर ऊंचाई के एक ठोस बेलन को पिघलाया और इसे 12 सेमी त्रिज्या के 'n' समान ठोस गोले में बदल दिया। 'n' का मान ज्ञात करें।
 (A) 27 (B) 26
 (C) 25 (D) 24
 (E) 28
32. 'A' और 'B' ने क्रमशः ₹5,000 और ₹8,000 का निवेश करके एक व्यवसाय शुरू किया। 18 महीनों के बाद, 'A' और 'B' ने अपने निवेश में 40% और क्रमशः ₹'Y' की वृद्धि इस प्रकार की कि 3 वर्ष के बाद, 'A' और 'B' के लाभ हिस्सों का अनुपात क्रमशः 2:3 था। 'Y' का मान कितना है?
 (A) 2500 (B) 2000
 (C) 1800 (D) 2100
 (E) 3000
33. एक कक्षा में 14 लड़के और 12 लड़कियां हैं। प्रत्येक लड़के और प्रत्येक लड़की की औसत आयु क्रमशः 21 वर्ष और 17 वर्ष है। यदि सभी लड़कों, लड़कियों और एक शिक्षक (जिनकी आयु 'x' वर्ष है) की आयु का योग 540 वर्ष है, तो 'x' का मान ज्ञात कीजिए।
 (A) 42 (B) 40
 (C) 44 (D) 46
 (E) 38
34. यदि 'A' का 50% 'B' के 30% के बराबर है और $(B - A) = 200$ है, तो $\frac{(3B - A)}{A}$ का मान ज्ञात कीजिए।
 (A) 8 (B) 2
 (C) 6 (D) 4
 (E) इनमें से कोई नहीं
35. एक कमीज को उसके क्रय मूल्य से 50% अधिक पर अंकित किया गया और फिर क्रमशः 25% और ₹25 की दो क्रमागत छूट देकर बेचा गया और ₹20 का लाभ अर्जित किया गया। कमीज का क्रय मूल्य कितना है?
 (A) ₹275 (B) ₹400
 (C) ₹360 (D) ₹320
 (E) ₹300

36. Rs. 26,000 को जब 'r%' प्रति वर्ष साधारण ब्याज पर 5 वर्ष के लिए निवेश किया जाता है तो Rs. 26,000 का ब्याज प्राप्त होता है। अर्जित ब्याज ज्ञात करें जब Rs. 30,000 को 2 वर्षों के लिए 'r%' प्रतिवर्ष वार्षिक देय चक्रवृद्धि ब्याज पर किया जाता है।

- (A) Rs. 6,300 (B) Rs. 13,200
(C) Rs. 19,200 (D) Rs. 14,400
(E) इनमें से कोई नहीं

37. 'A' अकेले एक काम को 30 दिनों में पूरा कर सकता है। 'A' और 'B' साथ में उसी काम को 20 दिनों में पूरा कर सकते हैं जबकि 'B' और 'C' इसे पूरा करने में 15 दिन लेते हैं। अकेले पूरे काम को समाप्त करने के लिए 'C' द्वारा लिया गया समय ज्ञात कीजिए।

- (A) 15 दिन (B) 20 दिन
(C) 25 दिन (D) 30 दिन
(E) इनमें से कोई नहीं

38. सर्विस होने से पहले, एक कार 35 किमी/घंटा की गति से दौड़ती है, जबकि सर्विस होने के बाद यह 70 किमी/घंटा की गति से दौड़ती है। सर्विस करने के बाद कार 5 घंटे में एक निश्चित दूरी तय करती है। समान दूरी को तय करने में कार को कितना समय लगेगा जब उसकी सर्विस नहीं की गई होगी?

- (A) 10 घंटे (B) 11 घंटे
(C) 12 घंटे (D) 9 घंटे
(E) 8 घंटे

39. शांत जल में समान गति से चलने वाली दो नावों के बीच 180 किमी की दूरी है। वे एक दूसरे की ओर एक धारा में यात्रा करते हैं जो 'y' किमी/घंटा की गति से बहती है। यदि वे 3 घंटे के बाद मिलते हैं, तो शांत जल में प्रत्येक नाव की गति ज्ञात कीजिए।

- (A) 24 किमी/घंटा (B) 20 किमी/घंटा
(C) 28 किमी/घंटा (D) 30 किमी/घंटा
(E) डेटा अपर्याप्त

निर्देश (40-41): प्रश्नों में दो समीकरण I और II दिए गए हैं। आपको x और y के बीच सही संबंध स्थापित करने के लिए दोनों समीकरणों को हल करना है और सही विकल्प चुनना है।

40. I. $x^2 - 15x + 50 = 0$ II. $y^2 + 40 = 13y$
(A) $x > y$ (B) $x < y$
(C) $x \leq y$ (D) $x \geq y$
(E) $x = y$ या संबंध स्थापित नहीं किया जा सकता

41. I. $x^4 - 638 = 658$ II. $y^2 + 321 = 346$
(A) $x > y$ (B) $x < y$
(C) $x = y$ या संबंध स्थापित नहीं किया जा सकता
(D) $x \geq y$ (E) $x \leq y$

निर्देश (42-44): निम्नलिखित प्रश्न में प्रश्न चिह्न (?) के स्थान पर क्या अनुमानित मान आएगा? (नोट: आपको सटीक मान की गणना करने की आवश्यकता नहीं है।)

42. 1099.99 का 23.95% + 2199.93 का 59.86% = ?
(A) 1584 (B) 1622

- (C) 1489 (D) 1758
(E) 1214

43. $\{(40.11\% \ 199.99 - 59.95)/(11.95 + 18.99 - 25.95)\}$
= ?

- (A) 16 (B) 400
(C) 4 (D) 250
(E) 10

44. 99.91 का 15.99% - 59.99 + 200 का 39.94% = ?

- (A) 24 (B) 2
(C) 12 (D) 18
(E) 6

निर्देश (45-50): दिए गए समीकरण में प्रश्नचिह्न (?) के स्थान पर क्या आएगा?

45. $128^{(1/7)} + ? - 18 = \sqrt{121}$

- (A) 29 (B) 31
(C) 27 (D) 33
(E) 25

46. 450 का 60% - 25 × ? = $12^2 - 24$

- (A) 6 (B) 8
(C) 5 (D) 12
(E) 10

47. $\{(49/84) + (30/84)\} \times 21 - (7/4) = ?$

- (A) 18 (B) 20
(C) 15 (D) 24
(E) 16

48. $46 \div 15 - (21/15) + ? = 125$

- (A) (365/3) (B) (370/3)
(C) (380/3) (D) (280/3)
(E) (180/3)

49. $\{4(\frac{1}{3}) + 5(\frac{2}{7})\} \times (\frac{126}{101}) = ?$

- (A) 25 (B) 12
(C) 18 (D) 9
(E) 15

50. $1\frac{1}{3}\%$ of 600 + 15 = ? - $1\frac{3}{5}\%$ of 1000

- (A) 29 (B) 49
(C) 39 (D) 59
(E) 19

निर्देश (51-53): निम्नलिखित श्रृंखला में प्रश्नचिह्न (?) के स्थान पर क्या आएगा?

51. 150, 158, 131, 195, 70, ?

- (A) 316 (B) 296
(C) 286 (D) 312
(E) 254

52. 123, 136, 162, ?, 253, 318

- (A) 214 (B) 211
(C) 231 (D) 201
(E) 209

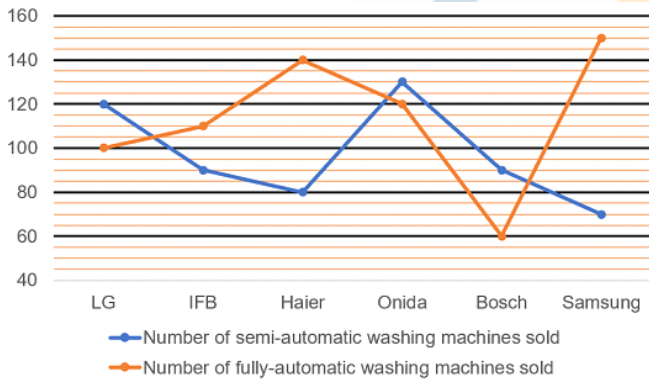
53. 426, 423, 414, 387, ?, 63
(A) 306 (B) 327
(C) 318 (D) 316
(E) 298

54. दो अलग-अलग संख्याएं 'A' और 'B' का योग 64 है और 'A' और 'B' के बीच का अंतर 16 है। उनके 'A' और 'B' के सबसे छोटे सामान्य गुणक (least common multiple) तथा 'A' और 'B' के उच्चतम सामान्य गुणक (highest common factor) का गुणनफल क्या है? (ध्यान दें: $A > B$)
(A) 1024 (B) 900
(C) 840 (D) 960
(E) 1120

निर्देश (55-60): नीचे दी गई जानकारी के आधार पर प्रश्नों के उत्तर दें।

नीचे दिया गया लाइन ग्राफ एक दुकान द्वारा बेचे जाने वाले छह अलग-अलग ब्रांडों की सेमी ऑटोमैटिक वाशिंग मशीन की संख्या और फुली ऑटोमैटिक वाशिंग मशीन की संख्या को दर्शाता है।

नोट: प्रत्येक ब्रांड की बेची गयी वाशिंग मशीन की कुल संख्या = बेची गयी सेमी ऑटोमैटिक वाशिंग मशीन की संख्या + बेची गयी फुली ऑटोमैटिक वाशिंग मशीन की संख्या



55. एलजी और हायर द्वारा बेची गयी सेमी-ऑटोमैटिक वाशिंग मशीन की संख्या के योग और हायर द्वारा बेची गयी वाशिंग मशीन की कुल संख्या का अनुपात ज्ञात कीजिए।
(A) 10:11 (B) 3:7
(C) 2:5 (D) 11:15
(E) 3:4

56. बेची गयी ओनिडा वाशिंग मशीन की कुल संख्या बेची गयी फुली ऑटोमैटिक आईएफबी वाशिंग मशीन की संख्या से कितनी अधिक है।
(A) 110 (B) 120
(C) 140 (D) 150
(E) 160

57. यदि व्हर्लपूल द्वारा बेची गयी सेमी-ऑटोमैटिक वाशिंग मशीन की संख्या सैमसंग की तुलना में 20% अधिक है और व्हर्लपूल द्वारा बेची गयी वाशिंग मशीन (सेमी-ऑटोमैटिक + फुली ऑटोमैटिक) की कुल संख्या 254 है, तो व्हर्लपूल द्वारा बेची गयी फुली ऑटोमैटिक वाशिंग मशीन की संख्या ज्ञात कीजिए।
(A) 140 (B) 150
(C) 120 (D) 170
(E) इनमें से कोई नहीं

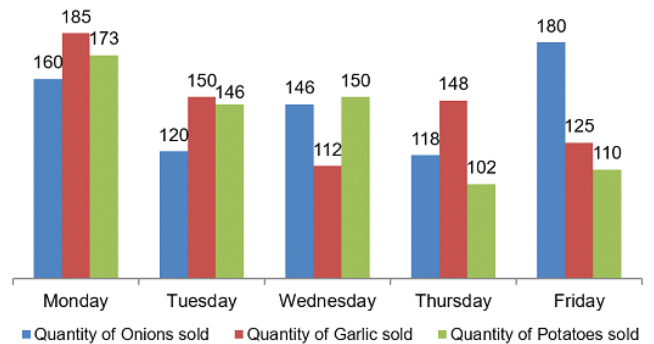
58. एलजी, हायर और सैमसंग द्वारा बेची गयी फुली ऑटोमैटिक वाशिंग मशीन की औसत संख्या ज्ञात कीजिए।
(A) 150 (B) 130
(C) 120 (D) 100
(E) 90

59. हायर और बॉश द्वारा बेची गयी फुली ऑटोमैटिक वाशिंग मशीन की संख्या का योग, एलजी द्वारा बेची गयी फुली ऑटोमैटिक वाशिंग मशीन की संख्या का कितना प्रतिशत है?
(A) 160% (B) 250%
(C) 200% (D) 150%
(E) 220%

60. यदि आईएफबी और गोदरेज द्वारा बेची गयी सेमी-ऑटोमैटिक वाशिंग मशीन की संख्या का अनुपात 3:11 है, तो गोदरेज द्वारा बेची गयी सेमी-ऑटोमैटिक वाशिंग मशीन की संख्या ज्ञात कीजिए।
(A) 220 (B) 330
(C) 440 (D) 110
(E) इनमें से कोई नहीं

निर्देश (61-65): नीचे दी गई जानकारी के आधार पर प्रश्नों के उत्तर दें।

नीचे दिए गए दंड आरेख में एक दुकान द्वारा सप्ताह के लगातार 5 दिनों में बेचे गये प्याज, लहसुन और आलू की मात्रा (किग्रा में) के बारे में जानकारी दी गई है।



61. यदि लहसुन और आलू का विक्रय मूल्य (प्रति किग्रा) ₹20 और ₹15 है, तो शुक्रवार को लहसुन और आलू बेचकर दुकान द्वारा अर्जित की गई कुल राशि कितनी है?
(A) ₹4,350 (B) ₹4,150
(C) ₹3,800 (D) ₹3,950
(E) ₹4,500

62. सोमवार को बेचे गए प्याज और आलू की मात्रा का योग उसी दिन बेचे गए लहसुन की मात्रा से कितना प्रतिशत अधिक है?
 (A) 50% (B) 80%
 (C) 60% (D) 75%
 (E) 70%
63. बुधवार को बेचे गए लहसुन की मात्रा तथा बुधवार और गुरुवार को बेचे गए आलू की कुल मात्रा का अनुपात कितना है?
 (A) 4:7 (B) 1:2
 (C) 3:7 (D) 4:9
 (E) 5:11
64. बुधवार, गुरुवार और शुक्रवार को बेचे गए प्याज की औसत मात्रा कितनी है?
 (A) 182 किग्रा (B) 130 किग्रा
 (C) 160 किग्रा (D) 148 किग्रा
 (E) 196 किग्रा
65. यदि शनिवार को बेची गयी प्याज की मात्रा मंगलवार को बेची गयी प्याज की मात्रा से 30% अधिक है, जबकि शनिवार को बेची गयी लहसुन की मात्रा मंगलवार को बेची गयी लहसुन की मात्रा से 20% कम है, तो शनिवार को बेचे गये प्याज और लहसुन की मात्रा का योग ज्ञात कीजिए।
 (A) 276 kg (B) 320 kg
 (C) 256 kg (D) 300 kg
 (E) 288 kg

Reasoning Aptitude

निर्देश (66-70) नीचे दी गई जानकारी के आधार पर निम्नलिखित प्रश्न का उत्तर दें।

सात लोग, जिम, बिल, ड्रेक, कोल, टिम, जैक और किम, विभिन्न पदों पर एक बैंक में तैनात हैं। बैंक में पद इस प्रकार हैं (कनिष्ठ से वरिष्ठ) : क्लर्क, प्रोबेशनरी ऑफिसर (पीओ), असिस्टेंट मैनेजर (एएम), मैनेजर, असिस्टेंट जनरल मैनेजर (एजीएम), डिप्टी जनरल मैनेजर (डीजीएम) और जनरल मैनेजर (जीएम)। जैक जिम से तीन पद वरिष्ठ हैं। टिम जैक से वरिष्ठ हैं। बिल पीओ है। किम टीम से तीन पद कनिष्ठ हैं। कोल ड्रेक से कनिष्ठ है। कोल एजीएम नहीं है।

66. कितने लोग ड्रेक से वरिष्ठ हैं?
 (A) चार (B) तीन
 (C) दो (D) एक
 (E) कोई नहीं
67. जिम कोल से _____ पद वरिष्ठ है।
 (A) एक (B) दो
 (C) तीन (D) चार
 (E) इनमें से कोई नहीं
68. _____ को डीजीएम के पद पर तैनात किया गया है।
 (A) ड्रेक (B) किम
 (C) जैक (D) जिम

(E) उपरोक्त में से कोई नहीं

69. जीएम के रूप में कौन तैनात है?
 (A) जैक (B) ड्रेक
 (C) किम (D) टिम
 (E) उपरोक्त में से कोई नहीं
70. जैक किम से _____ पद _____ है।
 (A) दो, कनिष्ठ (B) तीन, कनिष्ठ
 (C) दो, वरिष्ठ (D) चार, वरिष्ठ
 (E) उपरोक्त में से कोई नहीं

निर्देश (71-75): नीचे दी गई जानकारी के आधार पर प्रश्नों के उत्तर दें।

बारह व्यक्ति (A, B, C, D, E, F, P, Q, R, S, T, और U) एक दूसरे से समान दूरी वाले दो समानांतर पंक्तियों में बैठे हैं। छह व्यक्ति (A, B, C, D, E, और F) पंक्ति 1 में बैठे हैं और उत्तर दिशा का सामना करते हैं। छह व्यक्ति (P, Q, R, S, T, और U) पंक्ति 2 में बैठे हैं और दक्षिण दिशा का सामना करते हैं। पंक्ति 1 में बैठे व्यक्तियों का मुख पंक्ति 2 में बैठे व्यक्तियों की ओर है और इसके विपरीत भी ऐसा ही। पंक्ति 2 पंक्ति 1 के उत्तर में है। D, F के बाएं से दूसरे स्थान पर बैठा है। न तो F और न ही D किसी भी अंतिम छोर पर बैठा है। U, P के बगल में नहीं बैठा है। Q और R के बीच दो व्यक्ति बैठे हैं और R का मुख F की ओर नहीं है। A, B के बाईं ओर बैठा है। C और E के बीच दो व्यक्ति बैठे हैं, और E का मुख P की ओर है। P सबसे अंतिम छोर पर नहीं बैठा है। S, U के बायें से दूसरे स्थान पर बैठा है।

71. यदि R की ओर मुख करने वाला व्यक्ति अमरूद पसंद करता है तो B और उस व्यक्ति के बीच कितने व्यक्ति बैठे हैं जिसे अमरूद पसंद है?
 (A) एक (B) दो
 (C) एक भी नहीं (D) तीन
 (E) चार
72. यदि वह व्यक्ति जो पंक्ति 1 के अंतिम दायें छोर पर बैठा है, सब पसंद करता है, तब सब पसंद करने वाले व्यक्ति के सन्दर्भ में F का स्थान क्या है?
 (A) ठीक बांये (B) बांये से दूसरे स्थान पर
 (C) बांये से तीसरे स्थान पर (D) बांये से चौथे स्थान पर
 (E) निर्धारित नहीं किया जा सकता है
73. यदि Q के दायें से दूसरे स्थान पर बैठा व्यक्ति संतरा पसंद करता है तो कौन सा व्यक्ति उस व्यक्ति का सामना करता है जिसे संतरा पसंद है?
 (A) A (B) B
 (C) C (D) D
 (E) निर्धारित नहीं किया जा सकता
74. _____ उस व्यक्ति के बायें से तीसरे स्थान पर बैठा है जिसका मुख T की ओर है।
 (A) E (B) F
 (C) D (D) A
 (E) उपरोक्त में से कोई नहीं

75. निम्नलिखित पांच में से चार एक समूह के रूप में एक निश्चित तरीके से समान हैं, निम्नलिखित में से कौन उस समूह से संबंधित नहीं है?
 (A) T (B) B
 (C) U (D) S
 (E) C

निर्देश (76-80) नीचे दी गई जानकारी के आधार पर प्रश्नों के उत्तर दें:

एक अलमारी में दस शेल्स M, N, O, P, Q, R, S, T, U और V इस प्रकार हैं कि सबसे नीचे वाली शेल्फ की संख्या 1 है जबकि सबसे ऊपरी शेल्फ की संख्या 10 है लेकिन आवश्यक नहीं कि इसी क्रम में हो। N और R के बीच चार शेल्स हैं। V न तो एक अभाज्य संख्या वाला शेल्फ है और न ही यह R के ऊपर है। N O के दो शेल्स नीचे हैं। R और V के बीच तीन शेल्स हैं। U, P के एक शेल्फ नीचे है। O एक अभाज्य संख्या वाला शेल्फ है। Q, R के बगल में नहीं है। M, P के तत्काल ऊपर और T के तत्काल नीचे है।

76. M के ऊपर कितनी शेल्स हैं?
 (A) नौ (B) छह
 (C) आठ (D) सात
 (E) उपरोक्त में से कोई नहीं
77. ____ Q के एक शेल्फ नीचे है।
 (A) S (B) O
 (C) V (D) N
 (E) उपरोक्त में से कोई नहीं
78. सबसे निचला शेल्फ कौन सा है?
 (A) R (B) P
 (C) S (D) U
 (E) उपरोक्त में से कोई नहीं
79. S और M के बीच कितनी शेल्स हैं?
 (A) दो (B) तीन
 (C) एक भी नहीं (D) चार
 (E) उपरोक्त में से कोई नहीं
80. V के तीन शेल्स नीचे कौन सा शेल्फ है?
 (A) M (B) N
 (C) P (D) U
 (E) उपरोक्त में से कोई नहीं

निर्देश (81-85) नीचे दी गई जानकारी के आधार पर निम्नलिखित प्रश्न का उत्तर दें।

एक वृत्ताकार मेज पर सम संख्या में व्यक्ति बैठे हैं (जो 14 से कम है) जहाँ सभी का मुख केंद्र की ओर है। कोई भी सीट खाली नहीं है।

B A के दाएँ से तीसरे स्थान पर बैठा है। C, B के बगल में बैठा है। A और D (A के बाएँ से) के बीच उतने ही व्यक्ति बैठे हैं जितने A और C के बीच (A के दाएँ से)। F, A और D के ठीक मध्य में बैठा है (A के बाएँ से)। F के बाएँ या दाएँ से, F और E के बीच बैठे व्यक्तियों की संख्या एक

विषम संख्या है। C के दाएँ से गिनने पर C और E के बीच छह व्यक्ति बैठे हैं। E के दाएँ से गिनने पर, E और D के बीच या तो तीन व्यक्ति बैठे हैं या कोई नहीं बैठा है। G, H के दाएँ से तीसरे स्थान पर बैठा है। न तो H और न ही G B के बगल में बैठा है।

81. H, A के दाएँ ओर से ____ स्थान पर बैठा है।
 (A) तीसरे (B) चौथा
 (C) पाचवाँ (D) छठा
 (E) उपरोक्त में से कोई नहीं
82. E के दाएँ से गिनने पर E और A के मध्य कितने व्यक्ति बैठे हैं?
 (A) आठ (B) दो
 (C) पांच (D) छह
 (E) एक भी नहीं
83. ____ C के बाएँ से तीसरे स्थान पर बैठा है।
 (A) H (B) D
 (C) F (D) E
 (E) उपरोक्त में से कोई नहीं
84. D, H के ____ से ____ स्थान पर बैठा है।
 (A) बाएँ, पांचवाँ (B) बाएँ, सातवाँ
 (C) दाएँ, सातवाँ (D) बाएँ, छठे
 (E) उपरोक्त में से कोई नहीं
85. B के बाएँ से गिनने पर B और G के मध्य कितने व्यक्ति बैठे हैं?
 (A) तीन (B) चार
 (C) पांच (D) छह
 (E) उपरोक्त में से कोई नहीं

निर्देश (86-89): नीचे दी गई जानकारी के आधार पर प्रश्नों के उत्तर दें:

**T Y * 6 % K A & @ 4 5 8 Q T S F B M € 2 1 ¥ L
 S Z X 3 9 H K L ©**

86. ऐसी कितनी संख्याएँ हैं जिनके तत्काल पहले अभाज्य संख्याएँ हैं?
 (A) तीन (B) एक
 (C) चार (D) दो
 (E) एक भी नहीं
87. दिए गए श्रृंखला में, वैसे सभी प्रतिक को हटा दिया जाता है जिनके तत्काल बाद एक सम संख्या है, तो बाएँ छोर से बारहवाँ तत्व कौन सा है?
 (A) Q (B) S
 (C) T (D) F
 (E) उपरोक्त में से कोई नहीं
88. विषम चुनें।
 (A) Y6% (B) A@4
 (C) 8TS (D) B€2
 (E) ¥LZ

89. "K" और "५" के बीच की संख्याओं का योग क्या है?

- (A) 21 (B) 20
(C) 17 (D) 19
(E) उपरोक्त में से कोई नहीं

निर्देश (90-91) प्रश्न में कुछ कथनों के बाद तीन निष्कर्ष I, II और III दिए गए हैं। आपको दिए गए कथनों को सत्य मानना है, भले ही वे ज्ञात तथ्यों से अलग दिखाई देते हों। सभी निष्कर्षों को पढ़ें और फिर तय करें कि दिए गए निष्कर्षों में से कौन-सा निष्कर्ष दिए गए कथनों का अनुसरण करता है।

90. **कथन:** सभी सन राउंड है

कुछ राउंड मून है

कोई भी मून अर्थ नहीं है

निष्कर्ष: I. सभी सन मून हो सकता है

II. कुछ राउंड अर्थ नहीं है

III. कुछ अर्थ सन है

- (A) केवल निष्कर्ष II अनुसरण करता है
(B) केवल निष्कर्ष I और निष्कर्ष II अनुसरण करते हैं
(C) केवल निष्कर्ष I अनुसरण करता है
(D) केवल निष्कर्ष II और निष्कर्ष III अनुसरण करते हैं
(E) कोई भी निष्कर्ष अनुसरण नहीं करता है

91. **कथन:** कुछ वुडेन रोड है

कोई भी पेवमेंट रूट नहीं है

केवल कुछ वुडेन पेवमेंट है

निष्कर्ष: I. सभी रोड वुडेन हो सकते हैं

II. कोई भी रोड रूट नहीं है

III. कुछ वुडेन रूट नहीं है

- (A) केवल निष्कर्ष II अनुसरण करते हैं।
(B) केवल निष्कर्ष I और निष्कर्ष III अनुसरण करते हैं।
(C) केवल निष्कर्ष I अनुसरण करते हैं।
(D) केवल निष्कर्ष II और निष्कर्ष III अनुसरण करते हैं।
(E) निष्कर्ष I, II और III में से कोई भी अनुसरण नहीं करता है

निर्देश (92-93) नीचे दी गई जानकारी के आधार पर प्रश्नों के उत्तर दें।

परीक्षा में रोहित ने छह विषयों (गणित, विज्ञान, अंग्रेजी, हिंदी, कंप्यूटर और पर्यावरण विज्ञान) में अलग-अलग अंक प्राप्त किए। हिंदी में उसके अंक कंप्यूटर से अधिक लेकिन विज्ञान से कम हैं। कंप्यूटर के अंक अंग्रेजी से ज्यादा हैं। कम से कम तीन विषयों के अंक पर्यावरण विज्ञान से कम हैं। हिंदी के अंक केवल एक विषय से कम हैं। अंग्रेजी के अंक सबसे कम नहीं हैं। (सभी अंक पूर्णांक में हैं न कि दशमलव में)

92. रोहित ने किस विषय में तीसरे सबसे कम अंक प्राप्त किए?

- (A) गणित (B) पर्यावरण विज्ञान
(C) अंग्रेजी (D) कंप्यूटर
(E) उपरोक्त में से कोई नहीं

93. यदि रोहित द्वारा पर्यावरण विज्ञान में प्राप्त अंक 88 हैं, तो रोहित द्वारा गणित में प्राप्त अंक _____ हो सकते हैं।

- (A) 87 (B) 89
(C) 86 (D) 85
(E) उपरोक्त में से कोई नहीं

94. प्रश्न में, दिए गए कथनों को सत्य मानते हुए निम्नलिखित में से तीन निष्कर्षों में से कौन-सा निष्कर्ष सत्य है और फिर तदनुसार अपना उत्तर दें।

कथन: $R \geq U \geq S \geq T = K$, $L < O < T$, $R \leq P \leq M < U$

निष्कर्ष: I. $O \leq M$ II. $K \leq P$

III. $U > L$

- (A) केवल निष्कर्ष I और III सत्य हैं।
(B) केवल निष्कर्ष I और II सत्य हैं।
(C) केवल निष्कर्ष I सत्य है।
(D) केवल निष्कर्ष II और III सत्य हैं।
(E) कोई भी निष्कर्ष सत्य नहीं है।

95. दिए गए प्रश्न में कथनों को सत्य मानते हुए निम्नलिखित में से तीन निष्कर्षों में से कौन सा निष्कर्ष सत्य है और उसके अनुसार अपना उत्तर दें।

कथन: $R \geq L > T \geq M$; $M < S < O$; $R < I < K$

निष्कर्ष: I. $K > M$ II. $O \geq T$

III. $L \geq M$

- (A) केवल निष्कर्ष I सत्य है
(B) केवल निष्कर्ष I और II सत्य हैं
(C) केवल निष्कर्ष I और III सत्य हैं
(D) केवल निष्कर्ष II और III सत्य हैं
(E) उपरोक्त में से कोई नहीं

निर्देश (96-97): नीचे दी गई जानकारी के आधार पर निम्नलिखित प्रश्न का उत्तर दें।

तीन पीढ़ियों के एक परिवार में आठ सदस्य, P, Q, R, S, T, U, V और W हैं। परिवार में कोई भी अविवाहित व्यक्ति एक अभिवाक नहीं है।

P, R का दादा/नाना है। R, T की पत्नी है। P और उसकी पत्नी का कोई भाई-बहन नहीं है। Q, S की माता है। Q, P से विवाहित नहीं है। S विवाहित नहीं है। U, V का पिता है। V की केवल एक बहन है। Q, W की इकलौती संतान है।

96. V, W से किस प्रकार संबंधित है?

- (A) पोती/नवासी (B) दादा/नाना
(C) भाई (D) दादी/नानी
(E) निर्धारित नहीं किया जा सकता है

97. U, W का _____ है।

- (A) पोता/नाती (B) पिता
(C) दामाद (D) पुत्र
(E) उपरोक्त में से कोई नहीं

निर्देश (98-99) नीचे दी गई जानकारी के आधार पर प्रश्नों के उत्तर दें।

एक कागज़ पर सात बिंदु (K, M, J, N, O, P, और Q) खींचे गए हैं। बिंदु P, बिंदु M के 13 सेमी पश्चिम में है। बिंदु Q, बिंदु P के 11 सेमी दक्षिण में है और बिंदु P बिंदु J के 6 सेमी पश्चिम में है। बिंदु K और बिंदु Q के बीच की दूरी बिंदु M और बिंदु J के बीच की दूरी से 2 सेमी कम है। बिंदु K,

बिंदु Q के पश्चिम में है। बिंदु N, बिंदु O के 5 सेमी उत्तर में है, और बिंदु O बिंदु K के 6 सेमी उत्तर में है।

98. बिंदु Q के सन्दर्भ में बिंदु N ____ दिशा में है।
 (A) उत्तर-पूर्व (B) उत्तर-पश्चिम
 (C) दक्षिण-पश्चिम (D) दक्षिण-पूर्व
 (E) उत्तर
99. बिंदु K और बिंदु Q के बीच की दूरी बिंदु O और ____ के बीच की दूरी के बराबर है।

- (A) बिंदु K (B) बिंदु M
 (C) बिंदु J (D) बिंदु N
 (E) उपरोक्त में से कोई नहीं

100. शब्द 'SRILANKA' में अक्षरों के ऐसे कितने जोड़े हैं जिनके बीच उतने ही अक्षर हैं जितने कि अंग्रेजी वर्णमाला श्रृंखला में होते हैं?
 (A) दो (B) तीन
 (C) चार (D) एक भी नहीं
 (E) उपरोक्त में से कोई नहीं

Space for rough work

DAILY SLIDES (SUBJECT WISE)

53 Different Slides Brand Promotion Highly Engaging

Price: ₹ 5,999/- for 6 Month (10 Slides)

CET STUDY MATERIAL KIT

4 Books 1,400+ Pages 7,250+ Questions

Price: ₹ 11,999/- Per Book

DNA DAILY NEWS ANALYSIS

10 Important News Brand Promotion Mobile Screen Friendly

Price: ₹ 8,499/- for 6 Month

BEST SELLER

CA/GA BOOKLET

5 General Awareness Mock Tests
 50 Questions Per Set
 Latest Pattern Based
 Brand Promotion

Price: ₹ 7,999/- for 6 Month

English Language

1. **Answer: (B)**
(b) is the right answer. In B, replace the plural verb ARE with the singular verb IS as the subject of the sentence is in singular form. The sentence talks about social media outrage being fuelled by intolerance.
2. **Answer: (D)**
In D, replace the singular verb HAS with the plural HAVE as the subject CHILDREN is plural. Thus, D is the right answer.
3. **Answer: (A)**
In A, replace the singular verb HAS with the plural HAVE as the subject STATES is plural. Thus, A is the right answer.
4. **Answer: (C)**
In C, replace the noun ENVIRONMENT with the adjective ENVIRONMENTAL to modify the noun REFUGEES. So, C is the correct answer.
5. **Answer: (B)**
We need a verb in past participle form to fit in the BE + VERB passive voice construction. The sentence seeks to convey that specific and long lasting provisions should be passed to combat hate speech. ENACTED (passed) and CONSTITUTED (created legally) will fit here contextually. Thus, (b) is the right answer.
Destined - certain of meeting/ happening. Insured - legally entitled to receive benefits.
6. **Answer: (D)**
We need a verb in base form to fit in the SHOULD + NOT + VERB active voice construction. The sentence seeks to convey that the life and health of workers should not be ignored due to the firework industry's contribution to the country's economy. ABSOLVE/RELIEVE (free from guilt or obligation) will fit here contextually. Thus, (d) is the right answer.
Accolade - praise. Obfuscate - make something less clear.
7. **Answer: (C)**
We need a verb in base form to follow the modal verb COULD. The sentence talks about the disoriented view of GDP data revealing stuff that could weaken economic recovery. UNDERMINE and DEBILITATE both mean weaken and will fit here. Thus, (c) is the right answer.
Revoke - cancel. Denounce - criticise.
8. **Answer: (B)**
We need a past verb form to modify the noun DISTRIBUTION. The sentence tells us that the lack of internet connectivity in rural areas HINDERED (obstructed) the distribution of covid-19 vaccines and government schemes. So, B is the correct answer.
Rendered - provided. Obstruct - block. Restraint (noun) - control. Impeding - hindering.
9. **Answer: (C)**
The sentence tells us how we humans are suspicious (distrustful) of our technologies (machinery) as we are intrigued by the possibilities (potential applications) that they open up. C is incorrectly spelled. The correct spelling of the word is FASCINATED (intrigued; curious). Thus, C is the right answer.
10. **Answer: (A)**
The sentence tells us that as per a renowned Indian CYTOGENETICIST (cell specialist) and bee expert, beekeeping has the POTENTIAL (capacity) to raise resources equal to the REVENUES (incomes) of the Indian Railways. The use of IMMIDENT (immediate, impending) is incorrect here and should be replaced with EMINENT (notable). So, A is the correct answer.
11. **Answer: (D)**
The sentence tells us how not all countries have the same capability (capacity) to reduce (decrease) emissions, measure and report progress (advancement), or increase preparation against climate change. D is incorrectly spelled. The correct spelling of the word is RESILIENCE. Thus, D is the right answer.
12. **Answer: (D)**
(d) is the right answer. We need to replace OVERLOOK with OVERLOOKED as we need a verb in past participle form to fit in the ARE + VERB passive voice construction. The sentence seeks to convey how the simple ideas that are ignored can give rise to great discoveries.
13. **Answer: (B)**
The sentence tells us how India has witnessed (experienced) huge (significant) growth in the prevalence (commonness) of phones since costs have dropped (fallen). We need to interchange the verbs DROPPED and WITNESSED as the sentence talks about a fall in costs. Thus, B is the right answer.
14. **Answer: (C)**
The sentence tells us how market forces have been moving (driving) the sector (industry) in the right direction but the government needs to step in (intervene) to help (assist). We need to interchange the verb HELP with the noun SECTOR, as we need a noun to be modified by the definite article THE, and a base form verb to fit in the TO + VERB infinitive construction. Thus, C is the right answer.
15. **Answer: (E)**
The sentence tells us how we are heading (moving) into a post-antibiotic era (period) where common (general) infections could once again be deadly (fatal). All the words are correctly placed in the sentence. Thus, E is the right answer.
16. **Answer: (B)**
The sentence tells us how we are failing (proving to be unsuccessful) to treat (cure) infections and patients are forced (compelled) to stay longer in care facilities to overcome (recover from) them. We need to interchange the verbs FORCED with TREAT, as we need a past participle verb to fit in the ARE + VERB passive voice construction, and a base form verb to fit in the TO + VERB infinitive construction. Thus, B is the right answer.
17. **Answer: (C)**
The sentence tells us how the New York meeting is perfectly timed to escalate (increase the focus of) the issue (matter) to a level that befits (is more suitable for) the magnitude (intensity) of the problem. We need to interchange the verb BEFITS with the noun ISSUE, as we need a noun to be modified by the definite article THE. Thus, C is the right answer.
18. **Answer: (E)**
CAPRICIOUS means given to sudden or unaccountable changes in mood or behaviour. FICKLE, ERRATIC and FLIGHTY are its synonyms. Thus, E is the right answer.
- Directions sol: (19-23):**
PSRTQ is the final order. P begins the passage by introducing the subject -- the need for African countries to diversify their wheat sources. S comes next by stating the first reason for doing so -- wheat being an important component of diets. R follows S by stating that not having enough wheat could result in hunger and political instability. T comes next by giving the second reason for the need for wheat diversification -- the impact on political and military decisions. Q concludes the passage by further substantiating the second reason -- Africa's reliance on Russian wheat could have impacted its voting on

the UN reAnswers concerning Russia's invasion of Ukraine.

19. Answer: (A)
20. Answer: (D)
21. Answer: (B)
22. Answer: (E)
23. Answer: (C)
24. Answer: (B)

Refer to the lines: "Yes, he wanted to win the award, yes, he wanted to be recognised for his pioneering insights into how subatomic particles build our universe. He just wanted to be recognised for it quietly." From the above lines, we can conclude that option (b) is the right answer.

(a) is not true. Refer to the lines: "I grew up a rather isolated child"; his marriage and its failure because of his workaholic habits; a resulting, paralysing depression; his dedication to social justice causes, which at one point led him to suspect that he had "become an embarrassment" to some of his colleagues."

(c) is not true. Frank Close was not awarded a Nobel Prize as per the passage.

(d) is not true. Close is ready to defend Higgs against his critics, including Stephen Hawking. Refer to the lines: "Close brings to this story an insider's knowledge and a combat-ready willingness to defend Higgs against his occasional critics, at one point dismissing the high-profile British physicist Stephen Hawking as a man with a "singular genius for playing the media."

(e) is not true. As per the passage, Elusive is a biography of Peter Higgs, written by Frank Close.

25. Answer: (E)

(e) is the right answer. Refer to the lines: "One is left to wonder if Frank Close chose the title Elusive as a reference to the glimmering subatomic particle of Higgs's theory — or to the theorist himself." From the above lines, we can infer that the author of the passage is uncertain about the actual reason behind the title. ONE IS LEFT TO WONDER showcases the uncertainty in the author's tone.

Option (b) is irrelevant in context to the given question.

26. Answer: (B)

(b) is the right answer. Refer to the lines: "Their conversations, not entirely revealing, were mostly conducted via Higgs's treasured landline phone. As a result, although his publisher describes Elusive as "the first major biography of Peter Higgs," Close seems less sure of that, describing his book as "not so much a biography of the man but of the boson named after him." Close's description is more accurate." The above lines imply that Close's not so revealing conversations with Higgs was the reason why he considered his book Elusive as not much of a biography of Higgs but of the boson named after him.

1 and 3 are mentioned in the passage but they are incorrect in context to the given question.

27. Answer: (A)

(a) is the right answer. Cloze mentions Higgs's theory as a subtle challenge. Refer to the lines: "It is those three weeks that anchor the real story in this book, a clear, vivid and occasionally even beautiful portrait of a scientific breakthrough: the tale of how a relatively obscure Scotland-based physicist developed a stunning theory, one that would help illuminate the invisible, particulate web that holds our universe together." and "Close writes, the theory issued a subtle challenge: "Is this just a clever piece of mathematics or does nature really work this way?"

Option (a) and (b) are mentioned in the passage but they are just an elaboration of Higgs's actions and suggestions related to the theory.

Option (d) is incorrect in context to the given question.

28. Answer: (D)

(d) is the right answer. Refer to the lines: "Close uses that question as a launching point, taking the reader through much of the history of particle physics and introducing the key players, the insights by others in the field who moved the ideas forward and the eventual decision to build a machine in Switzerland — the Large Hadron Collider — to test the possibilities. The LHC would find confirmation for the boson's decay products in 2024." The above lines imply that 2 and 3 are correct, which makes D the right answer.

1 is incorrect as the LHC was built to test the possibilities of Higgs' theory not Close's.

29. Answer: (D)

(d) is the right answer. PREEMPTIVE means to act in advance. PRECAUTIONARY (action taken in advance to prevent the occurrence of something bad) will be its synonym.

Prejudiced - biased. Abnormal - not showing normal behaviour. Absurd - silly. Temporary - not permanent.

30. Answer: (A)

(a) is the right answer. TANTALISING means causing a feeling of interest or excitement. WEARY (lacking enthusiasm or strength) will be its antonym.

Dizzying - confusing. Varied - different. Aligned - adjusted in line. Adverse - not favourable.

Quantitative Aptitude

31. Answer: (A)

चूंकि बेलन को 'n' गोलाकार गेंदों में ढाला जाता है

तो, $n \times (4/3) \times \pi \times r^3 = \pi \times R^2 \times h$

जहाँ, r = गोलाकार गेंद की त्रिज्या

R = सिलेंडर की त्रिज्या

h = सिलेंडर की ऊंचाई

$n \times (4/3) \times \pi \times 12 \times 12 \times 12 = \pi \times 24 \times 24 \times 108$

या, n = 27

32. Answer: (B)

A का बढ़ा निवेश = $5000 \times 1.4 = ₹7,000$

फिर, क्रमशः A और B के लाभ शेयरों का अनुपात

= $(5000 \times 18 + 7000 \times 18) : (8000 \times 18 + (8000 + Y) \times 18) = 2:3$

या, $(12000)/(16000 + Y) = 2/3$

या, $36000 = 32000 + 2Y$

या, $Y = (36000 - 32000) \div 2$

या, Y = 2000

33. Answer: (A)

सभी लड़कों की आयु का योग = $14 \times 21 = 294$

सभी लड़कियों की आयु का योग = $12 \times 17 = 204$

So, $294 + 204 + x = 540$

Or, $x = 540 - 498 = 42$

इसलिए, विकल्प a सही उत्तर है।

34. Answer: (D)

ATQ;

$B = 200 + A \dots \dots \dots (1)$

साथ ही, 'A' का 50% = 'B' का 30%

या, $0.50 \times A = 0.30 \times B$

या, $0.5A = 0.3B$

या, $0.5A = 0.3 \times (200 + A)$ [समीकरण (1) से]

या, $0.5A = 60 + 0.3A$
 या, $0.2A = 60$
 तो, $A = 300$
 और, $B = 200 + 300 = 500$ [समीकरण (1) से]
 तो, $\{(3B - A)/A\} = \{(3 \times 500 - 300)/300\}$
 $= (1200/300) = 4$
 इसलिए, विकल्प d सही उत्तर है।

35. **Answer: (C)**

माना शर्ट का क्रय मूल्य = ₹100y
 फिर, शर्ट का अंकित मूल्य = $100y \times 1.5 = ₹150y$
 पहली छूट के बाद शर्ट की कीमत = $150y \times 0.75$
 $= ₹112.5y$
 दूसरी छूट के बाद शर्ट का अंतिम विक्रय मूल्य
 $= ₹(112.5y - 25)$
 प्रश्न के अनुसार,
 $112.5y - 25 = 100y + 20$
 या, $12.5y = 45$
 या, $y = (45/12.5) = 3.6$
 अतः कमीज का क्रय मूल्य = $100 \times 3.6 = ₹360$

36. **Answer: (B)**

माना ब्याज की दर 'r%' है
 तो, $\{(26000 \times r \times 5)/100\} = 2600$
 या, $r = 2600/130$
 या, $r = 20$
 इसलिए अर्जित चक्रवृद्धि ब्याज = $[(1.20)^2 - 1] \times 30000$
 $= 0.44 \times 30000 = \text{Rs. } 13,200$
 इसलिए, विकल्प b सही उत्तर है।

37. **Answer: (B)**

माना कार्य की कुल राशि 60 इकाई है।
 A की क्षमता = $60/30 = 2$ यूनिट/दिन
 A और B की संयुक्त क्षमता = $60/20 = 3$ यूनिट/दिन
 B और C की संयुक्त क्षमता = $60/15 = 4$ यूनिट/दिन
 इसलिए, B की क्षमता = $3 - 2 = 1$ इकाई/दिन
 C की क्षमता = $4 - 1 = 3$ यूनिट/दिन
 अतः लिया गया अभीष्ट समय = $60/3 = 20$ दिन

38. **Answer: (A)**

सर्विसिंग के बाद,
 कार द्वारा तय की गई दूरी = $70 \times 5 = 350$ किमी
 आवश्यक समय लिया = $350/35 = 10$ घंटे

39. **Answer: (D)**

माना नाव की शांत पानी की गति = 'x' किमी/घंटा
 तो, धारा के प्रतिकूल नाव की गति = $(x - y)$ किमी/घंटा
 अनुप्रवाह में नाव की गति = $(x + y)$ किमी/घंटा
 चूंकि, दोनों नावें एक दूसरे की ओर यात्रा कर रही हैं। तो,
 एक नाव की दूसरे के साथ सापेक्ष गति
 $= (x - y) + (x + y) = '2x'$ किमी/घंटा
 तो, $2x = 180/3 = 60$
 या, $x = (60/2) = 30$

40. **Answer: (E)**

I से:
 $x^2 - 15x + 50 = 0$
 या, $x^2 - 10x - 5x + 50 = 0$
 या, $x(x - 10) - 5(x - 10) = 0$
 या, $(x - 5)(x - 10) = 0$
 अतः, $x = 10$ या $x = 5$
 II से:
 $y^2 + 40 = 13y$

या, $y^2 - 13y + 40 = 0$
 या, $y^2 - 8y - 5y + 40 = 0$
 या, $y(y - 8) - 5(y - 8) = 0$
 या, $(y - 5)(y - 8) = 0$
 अतः, $y = 8$ या $y = 5$

x	संबंध	y
10	>	8
10	>	5
5	<	8
5	=	5

इसलिए संबंध स्थापित नहीं किया जा सकता है।
 इसलिए, विकल्प e सही उत्तर है।

41. **Answer: (C)**

I से:
 $x^4 - 638 = 658$
 $x^4 = 658 + 638$
 $x^4 = 1296$
 $x = +6, -6$
 II से:
 $y^2 + 321 = 346$
 $y^2 = 346 - 321$
 $y^2 = 25$
 $y = +5, -5$

x	सम्बन्ध	y
6	>	5
6	>	-5
-6	<	5
-6	<	-5

इसलिए, 'x' और 'y' के बीच संबंध स्थापित नहीं किया जा सकता है।

42. **Answer: (A)**

23.95% of $1099.99 + 59.86\%$ of $2199.93 = ?$
 24% of $1100 + 60\%$ of $2200 \sim ?$
 $0.24 \times 1100 + 0.60 \times 2200 \sim ?$
 $264 + 1320 \sim ?$
 $? \sim 1584$

Hence, option a.

43. **Answer: (C)**

$\{(40.11\%$ of $199.99 - 59.95)/(11.95 + 18.99 - 25.95)\} = ?$
 $\{(40\%$ of $200 - 60)/(12 + 19 - 26)\} \sim ?$
 $\{(0.4 \times 200 - 60)/(5)\} \sim ?$
 $\{(80 - 60)/(5)\} \sim ?$
 $20 \div 5 \sim ?$
 $? \sim 4$

इसलिए, विकल्प c सही उत्तर है।

44. **Answer: (E)**

15.99% of $99.91 - 59.99 + 39.94\%$ of $200 = ?^2$
 16% of $100 - 60 + 40\%$ of $200 \sim ?^2$
 $0.16 \times 100 - 60 + 0.4 \times 200 \sim ?^2$
 $16 - 60 + 80 \sim ?^2$
 $?^2 \sim 36$
 $? \sim \pm 6$

इसलिए, विकल्प e सही उत्तर है।

45. **Answer: (C)**

$128^{(1/7)} + ? - 18 = \sqrt{121}$

$$2^{(7 \times (1/7))} + ? - 18 = 11$$

$$? = 11 - 2 + 18$$

$$? = 27$$

46. **Answer: (A)**

$$60\% \text{ of } 450 - 25 \times ? = 12^2 - 24$$

$$270 - 25 \times ? = 144 - 24$$

$$270 - 25 \times ? = 120$$

$$25 \times ? = 270 - 120$$

$$? = (150/25)$$

$$? = 6$$

47. **Answer: (A)**

$$\{(49/84) + (30/84)\} \times 21 - (7/4) = ?$$

$$\{(49 + 30) \div 84\} \times 21 - (7/4) = ?$$

$$(79/84) \times 21 - (7/4) = ?$$

$$(79/4) - (7/4) = ?$$

$$? = (72/4)$$

$$? = 18$$

48. **Answer: (B)**

$$46 \div 15 - (21/15) + ? = 125$$

$$(46/15) - (21/15) + ? = 125$$

$$(25/15) + ? = 125$$

$$? = 125 - (5/3)$$

$$? = 370/3$$

इसलिए, विकल्प b सही उत्तर है।

49. **Answer: (B)**

$$\left\{4 \left(\frac{1}{3}\right) + 5 \left(\frac{2}{7}\right)\right\} \times \left(\frac{126}{101}\right) = ?$$

$$? = \{(13/3) + (37/7)\} \times (126/101) = \{(13 \times 7 +$$

$$37 \times 3)/21\} \times (126/101) = \{(91 + 111)/21\} \times$$

$$(126/101) = (202/21) \times (126/101) = 2 \times 6$$

$$? = 12$$

इसलिए, विकल्प b सही उत्तर है।

50. **Answer: (C)**

$$1\frac{1}{3}\% \text{ of } 600 + 15 = ? - 1\frac{3}{5}\% \text{ of } 1000$$

$$(4/300) \times 600 + 15 = ? - (8/500) \times 1000$$

$$8 + 15 = ? - 16$$

$$? = 39$$

51. **Answer: (C)**

$$150 + 2^3 = 158$$

$$158 - 3^3 = 131$$

$$131 + 4^3 = 195$$

$$195 - 5^3 = 70$$

$$70 + 6^3 = 286$$

52. **Answer: (D)**

$$123 + 13 \times 1 = 136$$

$$136 + 13 \times 2 = 162$$

$$162 + 13 \times 3 = 201$$

$$201 + 13 \times 4 = 253$$

$$253 + 13 \times 5 = 318$$

इसलिए, विकल्प d सही उत्तर है।

53. **Answer: (A)**

$$426 - 3^1 = 423$$

$$423 - 3^2 = 414$$

$$414 - 3^3 = 387$$

$$387 - 3^4 = 306$$

$$306 - 3^5 = 63$$

इसलिए, विकल्प a सही उत्तर है।

54. **Answer: (D)**

दिया गया है,

A + B = 64..... (1) और, A - B = 16..... (2) इसलिए,

$$'A' = \{(64 + 16)/2\} = (80/2) = 40$$

$$\text{तो, } B = 64 - 40 = 24$$

दी गई दो संख्याओं के L.C.M और H.C.F का गुणनफल

= दो संख्याओं का गुणनफल

$$\text{तो } A \times B = 40 \times 24 = 960$$

इसलिए, विकल्प d सही उत्तर है।

Directions sol: (55-60):

ब्रांड्स	बेची गई सेमी- ऑटोमैटिक वाशिंग मशीन की संख्या	बिकने वाली फ़ूली ऑटोमैटिक वाशिंग मशीन की संख्या	बेची गई वाशिंग मशीन की कुल संख्या
एलजी	120	100	220
आईएफबी	90	110	200
हायर	80	140	220
ओनिडा	130	120	250
बाश	90	60	150
सैमसंग	70	150	220

55. **Answer: (A)**

$$\text{आवश्यक अनुपात} = (120 + 80):220 = 200:220$$

$$= 10:11$$

56. **Answer: (C)**

$$\text{आवश्यक अंतर} = 250 - 110 = 140$$

57. **Answer: (D)**

व्हर्लपूल की बेची गई सेमी-ऑटोमैटिक वाशिंग मशीन की संख्या = 70 का 120% = $1.2 \times 70 = 84$

इसलिए, व्हर्लपूल में बिकने वाली फ़ूली ऑटोमैटिक वाशिंग मशीन की संख्या = $254 - 84 = 170$

58. **Answer: (B)**

$$\text{आवश्यक औसत} = \{(100 + 140 + 150)/3\} = (390/3) = 130$$

59. **Answer: (C)**

$$\text{आवश्यक प्रतिशत} = \{(140 + 60)/100\} \times 100$$

$$= 200\%$$

60. **Answer: (B)**

गोदरेज द्वारा बेची गई सेमी-ऑटोमैटिक वाशिंग मशीनों की संख्या = $90 \times (11/3) = 330$

61. **Answer: (B)**

$$\text{अर्जित की गई कुल राशि} = ₹125 \times 20 + 110 \times 15$$

$$= 2500 + 1650 = ₹4150$$

62. **Answer: (B)**

$$\text{आवश्यक प्रतिशत} = \{[(160 + 173 - 185) \div 185] \times 100 = (148/185) \times 100 = 80\%$$

63. **Answer: (D)**

$$\text{आवश्यक अनुपात} = 112:(150 + 102) = 112:252$$

$$= 4:9$$

64. **Answer: (D)**

$$\text{आवश्यक औसत} = (146 + 118 + 180) \div 3$$

$$= 148 \text{ किग्रा}$$

65. **Answer: (A)**

$$\text{शनिवार को बेचे गए प्याज की मात्रा} = 120 \times 1.3$$

$$= 156 \text{ किग्रा}$$

शनिवार को बिकने वाले लहसुन की मात्रा = $150 \times 0.8 = 120$ किग्रा
अतः अभीष्ट योग = $156 + 120 = 276$ किग्रा

Reasoning Aptitude

Directions sol: (66-70):

अंतिम व्यवस्था इस प्रकार है,

पद	व्यक्ति
GM	टिम
DGM	जैक
AGM	ड्रेक
Manager	किम
AM	जिम
PO	बिल
Clerk	कोल

66. **Answer: (C)**
दो व्यक्ति ड्रेक से वरिष्ठ हैं।
इसलिए, विकल्प c सही उत्तर है।
67. **Answer: (B)**
जिम कोल से वरिष्ठ दो पद हैं।
इसलिए, विकल्प b सही उत्तर है।
68. **Answer: (C)**
जैक DGM के पद पर तैनात हैं।
इसलिए, विकल्प c सही उत्तर है।
69. **Answer: (D)**
टिम GM के पद पर तैनात हैं।
इसलिए, विकल्प d सही उत्तर है।
70. **Answer: (C)**
जैक किम से दो पदनाम वरिष्ठ हैं।
इसलिए, विकल्प c सही उत्तर है।

Directions sol: (71-75):

अंतिम व्यवस्था इस प्रकार है:

पंक्ति	U	R	S	P	Q	T
2						
पंक्ति	C	A	D	E	F	B
1						

71. **Answer: (D)**
यदि वह व्यक्ति, जिसका मुख R की ओर है, अमरूद पसंद करता है, तो,
- | पंक्ति | U | R | S | P | Q | T |
|--------|---|---------|---|---|---|---|
| 2 | | | | | | |
| पंक्ति | C | A | D | E | F | B |
| 1 | | (अमरूद) | | | | |
- A का मुख R के सामने हैं।
B और A के मध्य तीन व्यक्ति बैठे हैं।
72. **Answer: (A)**
यदि वह व्यक्ति, जो पंक्ति 1 के अंतिम दायें छोर पर बैठा है, सेब पसंद करता है, तो,
- | पंक्ति | U | R | S | P | Q | T |
|--------|---|---|---|---|---|---------|
| 2 | | | | | | |
| पंक्ति | C | A | D | E | F | B (सेब) |
| 1 | | | | | | |
- B को सेब पसंद है।
F, B के ठीक बायें बैठा है।

73. **Answer: (D)**
यदि वह व्यक्ति, जो Q के दायें से दूसरे स्थान पर बैठा है, संतरा पसंद करता है, तो,

पंक्ति	U	R	S (संतरा)	P	Q	T
2						
पंक्ति	C	A	D	E	F	B
1						

S को संतरा पसंद है
D, S की ओर उन्मुख है।

74. **Answer: (C)**
D उस व्यक्ति के बायें से तीसरे स्थान पर बैठा है, जिसका मुख T की ओर है।
75. **Answer: (D)**
S को छोड़कर सभी व्यक्ति पंक्ति के अंतिम छोर पर बैठे हैं।

Directions sol: (76-80):

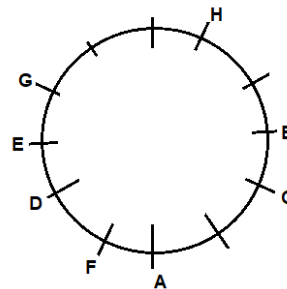
अंतिम तालिका नीचे दी गई है:

Position	Shelf
10	R
9	S
8	Q
7	O
6	V
5	N
4	T
3	M
2	P
1	U

76. **Answer: (D)**
सात शेल्स M के ऊपर हैं।
77. **Answer: (B)**
O, Q के नीचे एक शेल्फ है।
78. **Answer: (D)**
U सबसे निचला शेल्फ है।
79. **Answer: (E)**
S और M के बीच पांच शेल्स हैं।
80. **Answer: (A)**
M, V के तीन शेल्स नीचे हैं।

Directions sol: (81-85):

अंतिम व्यवस्था इस प्रकार है,



81. **Answer: (C)**
H, A के दायें से पांचवें स्थान पर बैठा है।
इसलिए, विकल्प c सही उत्तर है।
82. **Answer: (B)**
E के दायें से गिनने पर E और A के मध्य दो व्यक्ति बैठे हैं।
इसलिए, विकल्प b सही उत्तर है।

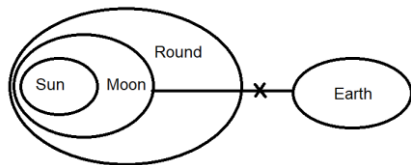
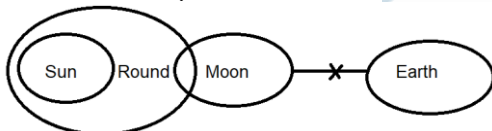
83. **Answer: (C)**
F, C के बायें से तीसरे स्थान पर बैठा है।
इसलिए, विकल्प c सही उत्तर है।
84. **Answer: (B)**
D, H के बायें से सातवें स्थान पर बैठा है।
इसलिए, विकल्प b सही उत्तर है।
85. **Answer: (D)**
B के बायें से गिनने पर B और G के मध्य छह व्यक्ति बैठे हैं।
इसलिए, विकल्प d सही उत्तर है।

Directions sol: (86-89):

दी गई श्रृंखला:

T Y * 6 % K A & @ 4 5 8 Q T S F B M € 2 1 ¥ L S
Z X 3 9 H K L ©

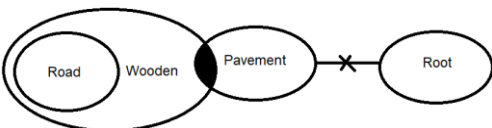
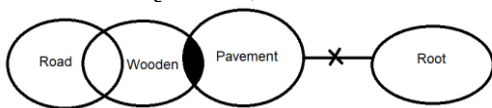
86. **Answer: (A)**
तीन संख्याएँ (8, 1 और 9) हैं जिनके ठीक पहले अभाज्य संख्याएँ हैं।
इसलिए, विकल्प a सही उत्तर है।
87. **Answer: (C)**
उन प्रतीकों को हटाने के बाद जो तुरंत सम संख्याओं से सफल हो जाते हैं, श्रृंखला बन जाती है:
T Y 6 % K A & 4 5 8 Q T S F B M 2 1 ¥ L S Z X 3 9
H K L ©
अतः वह तत्व जो बायें छोर से बारहवाँ है वह है : T
इसलिए, विकल्प c सही उत्तर है।
88. **Answer: (E)**
उपरोक्त सभी विकल्पों में, पहला तत्व दूसरे तत्व के बाएं से दूसरा तत्व है और दूसरा तत्व विकल्प ई को छोड़कर तीसरे तत्व के ठीक बाएं है।
इसलिए, विकल्प e सही उत्तर है।
89. **Answer: (B)**
"K" और "¥" के बीच की संख्याओं का योग है: $(4 + 5 + 8 + 2 + 1) = 20$
इसलिए, विकल्प b सही उत्तर है।
90. **Answer: (B)**
निम्नलिखित आंकड़े बनाए जा सकते हैं:



उपरोक्त आंकड़ों से केवल निष्कर्ष I और निष्कर्ष II अनुसरण करते हैं।

इसलिए, विकल्प b सही उत्तर है।

91. **Answer: (B)**
निम्नलिखित आकृति बनाई जा सकती है:



निम्नलिखित आंकड़ों से केवल निष्कर्ष I और निष्कर्ष III अनुसरण करते हैं।

Directions sol: (92-93):

अंतिम व्यवस्था नीचे दी गई है:

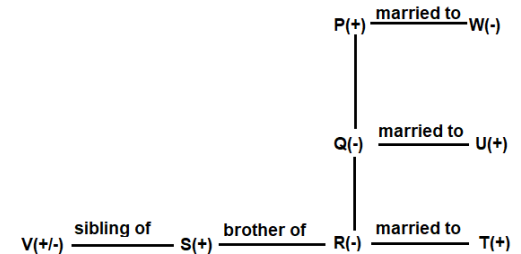
विज्ञान > हिंदी > पर्यावरण विज्ञान > कंप्यूटर > अंग्रेजी > गणित

(उच्चतम) (निम्नतम)

92. **Answer: (D)**
रोहित ने कंप्यूटर में तीसरा सबसे कम अंक हासिल किया।
इसलिए, विकल्प d सही उत्तर है।
93. **Answer: (D)**
रोहित द्वारा पर्यावरण विज्ञान में प्राप्त अंक 88 हैं, तो रोहित द्वारा गणित में प्राप्त अंक 85 हो सकते हैं।
इसलिए, विकल्प d सही उत्तर है।
94. **Answer: (D)**
दिया गया,
 $R \geq U \geq S \geq T = K$, $L < O < T$, $R \leq P \leq M < U$
दिए गए कथनों को मिलाने पर,
 $U > M \geq P \geq R \geq U \geq S \geq T = K > O > L$
I. $O \leq M$: असत्य (चुकि, $M \geq P \geq R \geq U \geq S \geq T = K > O$, अतः, $M > O$)
II. $K \leq P$: सत्य (चुकि, $P \geq R \geq U \geq S \geq T = K$, अतः, $P \geq K$)
III. $U > L$: सत्य (चुकि, $U > M \geq P \geq R \geq U \geq S \geq T = K > O > L$, अतः, $U > L$)
केवल निष्कर्ष II और III सत्य हैं।
95. **Answer: (A)**
दिया गया है,
 $R \geq L > T \geq M$; $M < S < O$; $R < I < K$
दिए गए कथनों के संयोजन पर,
 $K > I > R \geq L > T \geq M < S \leq O$
I. $K > M$: सत्य (जैसे, $K > I > R \geq L > T \geq M$, so, $K > M$)
II. $O \geq T$: असत्य (जैसे, $T \geq M < S \leq O$, इसलिए, O और T के बीच संबंध निर्धारित नहीं किया जा सकता है)
III. $L \geq M$: असत्य (जैसे, $L > T \geq M$, so, $L > M$)
केवल निष्कर्ष I सत्य है।
इसलिए, विकल्प a सही उत्तर है।

Directions sol: (96-97):

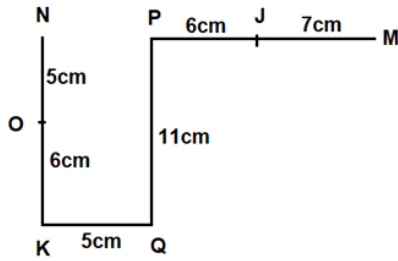
निम्नलिखित वंश वृक्ष दिए गए कथनों से खींचा जा सकता है:



96. **Answer: (E)**
V या तो W की नवासी या नाती है।
इसलिए, विकल्प e सही उत्तर है।
97. **Answer: (C)**
U, W का दामाद है।
इसलिए, विकल्प c सही उत्तर है।

Directions sol: (98-99):

हम निम्नलिखित आकृति बनाते हैं:



98. **Answer: (B)**
बिंदु N, बिंदु Q के उत्तर-पश्चिम दिशा में है।
99. **Answer: (D)**
बिंदु K और बिंदु Q के बीच की दूरी 5मी है।
बिंदु O और बिंदु N के बीच की दूरी 5मी है।
100. **Answer: (C)**
दिया गया शब्द: SRILANKA
SRILANKA शब्द में चार अक्षर-युग्म (SR, LN, NR और NS) हैं, जिनके बीच उतने ही अक्षर हैं जितने कि अंग्रेजी वर्णमाला श्रृंखला में हैं।

BANK STUDY MATERIAL KIT



7 Books 2,449+ Pages 15,000+ Questions
Price: ₹ 14,999/- Per Book

DAILY SLIDES (SUBJECT WISE)



53 Different Slides Brand Promotion Highly Engaging
Price: ₹ 5,999/- for 6 Month (10 Slides)

CA/GA BOOKLET



- 5 General Awareness Mock Tests
- 50 Questions Per Set
- Latest Pattern Based
- Brand Promotion

Price: ₹ 7,999/- for 6 Month

CET STUDY MATERIAL KIT



4 Books 1,400+ Pages 7,250+ Questions
Price: ₹ 11,999/- Per Book

DNA DAILY NEWS ANALYSIS



10 Important News Brand Promotion Mobile Screen Friendly
Price: ₹ 8,499/- for 6 Month

SSC STUDY MATERIAL KIT



6 Books | 2,149+ Pages | 13,500+ Questions

Price: ₹ 14,999/- Per Book



MONTHLY CURRENT AFFAIRS BOOSTER

ONE LINERS | BRANDING | PROMOTION

40+ PAGES

PRICE ₹2,499/- PER MONTH

SUBSCRIBE NOW!!

www.tesmus.com



MONTHLY CURRENT AFFAIRS MAGAZINE

CURRENT AFFAIRS | BRAND PROMOTION | MARKETING

PRICE ₹4,499/- PER MONTH

SUBSCRIBE NOW!!

120+ PAGES

www.tesmus.com